



FRANKLIN TEMPLETON  
INVESTMENTS

**Prospectus**  
January 1, 2015

---

# Templeton Growth Fund, Inc.

---

The U.S. Securities and Exchange Commission (SEC) has not approved or disapproved these securities or passed upon the adequacy of this prospectus. Any representation to the contrary is a criminal offense.

| Class A | Class C | Class R | Class R6 | Advisor Class |
|---------|---------|---------|----------|---------------|
| TEPLX   | TEGTX   | TEGRX   | FTGFX    | TGADX         |

---

# Contents

## Fund Summary

---

### Information about the Fund you should know before investing

|  |   |
|--|---|
| Investment Goal . . . . .  | 2 |
| Fees and Expenses of the Fund . . . . .                                    | 2 |
| Portfolio Turnover . . . . .   | 3 |
| Principal Investment Strategies . . . . .                                  | 3 |
| Principal Risks . . . . .  | 4 |
| Performance . . . . .  | 5 |
| Investment Manager . . . . .   | 7 |
| Portfolio Managers . . . . .   | 7 |
| Purchase and Sale of Fund Shares . . . . .                                 | 8 |
| Taxes . . . . .  | 8 |
| Payments to Broker-Dealers and<br>Other Financial Intermediaries . . . . . | 8 |

## Fund Details

---

### More information on investment policies, practices and risks/financial highlights

|   |    |
|---|----|
| Investment Goal . . . . .                             | 9  |
| Principal Investment Policies and Practices . . . . . | 9  |
| Principal Risks . . . . .                             | 10 |
| Management . . . . .                                  | 16 |
| Distributions and Taxes . . . . .                     | 18 |
| Financial Highlights . . . . .                        | 21 |

## Your Account

---

### Information about sales charges, qualified investors, account transactions and services

|                                  |    |
|----------------------------------|----|
| Choosing a Share Class . . . . . | 27 |
| Buying Shares . . . . .          | 37 |
| Investor Services . . . . .      | 40 |
| Selling Shares . . . . .         | 43 |
| Exchanging Shares . . . . .      | 45 |
| Account Policies . . . . .       | 49 |
| Questions . . . . .              | 58 |

## For More Information

---

### Where to learn more about the Fund

Back Cover

## Fund Summary

### Investment Goal

Long-term capital growth.

### Fees and Expenses of the Fund

These tables describe the fees and expenses that you may pay if you buy and hold shares of the Fund. You may qualify for sales charge discounts in Class A if you and your family invest, or agree to invest in the future, at least \$50,000 in Franklin Templeton funds. More information about these and other discounts is available from your financial professional and under “Your Account” on page 27 in the Fund’s Prospectus and under “Buying and Selling Shares” on page 43 of the Fund’s Statement of Additional Information.

#### Shareholder Fees

(fees paid directly from your investment)

|   | Class A           | Class C | Class R | Class R6 | Advisor Class |
|---|-------------------|---------|---------|----------|---------------|
| Maximum Sales Charge (Load) Imposed on Purchases (as percentage of offering price)                            | 5.75%             | None    | None    | None     | None          |
| Maximum Deferred Sales Charge (Load) (as percentage of the lower of original purchase price or sale proceeds) | None <sup>1</sup> | 1.00%   | None    | None     | None          |

1. There is a 1% contingent deferred sales charge that applies to investments of \$1 million or more (see “Investments of \$1 Million or More” under “Choosing a Share Class”) and purchases by certain retirement plans without an initial sales charge.

#### Annual Fund Operating Expenses

(expenses that you pay each year as a percentage of the value of your investment)

|   | Class A      | Class C      | Class R      | Class R6     | Advisor Class |
|---|--------------|--------------|--------------|--------------|---------------|
| Management fees <sup>1</sup>                | 0.67%        | 0.67%        | 0.67%        | 0.67%        | 0.67%         |
| Distribution and service (12b-1) fees       | 0.25%        | 1.00%        | 0.50%        | None         | None          |
| Other expenses <sup>1</sup>                 | 0.11%        | 0.11%        | 0.11%        | 0.02%        | 0.11%         |
| <b>Total annual Fund operating expenses</b> | <b>1.03%</b> | <b>1.78%</b> | <b>1.28%</b> | <b>0.69%</b> | <b>0.78%</b>  |

1. Management fees and other expenses have been restated to reflect current fiscal year fees and expenses as a result of the bundling of the Fund’s investment management agreement with its fund administration agreement effective July 1, 2014. Such combined investment management fees are described further under “Management” in the Fund’s prospectus. Total annual fund operating expenses are not affected by such bundling.

#### Example

This Example is intended to help you compare the cost of investing in the Fund with the cost of investing in other mutual funds. The Example assumes that you invest \$10,000 in the Fund for the time periods indicated and then redeem all of your shares at the end of the period. The Example also assumes that your investment has a 5% return each year and that the Fund’s operating expenses remain the same. Although your actual costs may be higher or lower, based on these assumptions your costs would be:

|                                 | 1 Year | 3 Years | 5 Years | 10 Years |
|---------------------------------|--------|---------|---------|----------|
| <b>Class A</b>                  | \$674  | \$884   | \$1,111 | \$1,762  |
| <b>Class C</b>                  | \$281  | \$560   | \$964   | \$2,095  |
| <b>Class R</b>                  | \$130  | \$406   | \$702   | \$1,545  |
| <b>Class R6</b>                 | \$70   | \$221   | \$384   | \$859    |
| <b>Advisor Class</b>            | \$80   | \$249   | \$433   | \$966    |
| If you do not sell your shares: |        |         |         |          |
| <b>Class C</b>                  | \$181  | \$560   | \$964   | \$2,095  |

### Portfolio Turnover

The Fund pays transaction costs, such as commissions, when it buys and sells securities (or “turns over” its portfolio). A higher portfolio turnover rate may indicate higher transaction costs and may result in higher taxes when Fund shares are held in a taxable account. These costs, which are not reflected in annual Fund operating expenses or in the Example, affect the Fund’s performance. During the most recent fiscal year, the Fund’s portfolio turnover rate was 17.17% of the average value of its portfolio.

### Principal Investment Strategies

Under normal market conditions, the Fund invests primarily in the equity securities of companies located anywhere in the world, including developing markets. The equity securities in which the Fund primarily invests are common stock. The Fund may invest in companies of any size, including small and medium capitalization companies. Although the Fund seeks investments across a number of countries and sectors, from time to time, based on economic conditions, the Fund may have significant positions in particular countries or sectors.

When choosing equity investments for the Fund, the investment manager applies a “bottom-up,” value-oriented, long-term approach, focusing on the market price of a company’s securities relative to the investment manager’s evaluation of the company’s long-term earnings, asset value and cash flow potential. The investment manager also considers a company’s price/earnings ratio, price/cash flow ratio, profit margins and liquidation value.

The investment manager may consider selling an equity security when it believes the security has become overvalued due to either its price appreciation or changes in the company’s fundamentals, or when the investment manager believes another security is a more attractive investment opportunity.

## Principal Risks

You could lose money by investing in the Fund. Mutual fund shares are not deposits or obligations of, or guaranteed or endorsed by, any bank, and are not insured by the Federal Deposit Insurance Corporation, the Federal Reserve Board, or any other agency of the U.S. government.

**Market** The market values of securities or other investments owned by the Fund will go up or down, sometimes rapidly or unpredictably. A security’s market value may be reduced by market activity or other results of supply and demand unrelated to the issuer. This is a basic risk associated with all securities. When there are more sellers than buyers, prices tend to fall. Likewise, when there are more buyers than sellers, prices tend to rise.

Stock prices tend to go up and down more dramatically than those of debt securities. A slower-growth or recessionary economic environment could have an adverse effect on the prices of the various stocks held by the Fund.

**Foreign Securities** Investing in foreign securities typically involves more risks than investing in U.S. securities, and includes risks associated with: internal and external political and economic developments – e.g., the political, economic and social policies and structures of some foreign countries may be less stable and more volatile than those in the U.S. or some foreign countries may be subject to trading restrictions or economic sanctions; trading practices – e.g., government supervision and regulation of foreign securities and currency markets, trading systems and brokers may be less than in the U.S.; availability of information – e.g., foreign issuers may not be subject to the same disclosure, accounting and financial reporting standards and practices as U.S. issuers; limited markets – e.g.,

the securities of certain foreign issuers may be less liquid (harder to sell) and more volatile; and currency exchange rate fluctuations and policies. The risks of foreign investments may be greater in developing or emerging market countries.

**Developing Market Countries** The Fund’s investments in developing market countries are subject to all of the risks of foreign investing generally, and have additional heightened risks due to a lack of established legal, political, business and social frameworks to support securities markets, including: delays in settling portfolio securities transactions; currency and capital controls; greater sensitivity to interest rate changes; pervasiveness of corruption and crime; currency exchange rate volatility; and inflation, deflation or currency devaluation.

**Smaller and Midsize Companies** Securities issued by smaller and midsize companies may be more volatile in price than those of larger companies, involve substantial risks and should be considered speculative. Such risks may include greater sensitivity to economic conditions, less certain growth prospects, lack of depth of management and funds for growth and development, and limited or less developed product lines and markets. In addition, smaller and midsize companies may be particularly affected by interest rate increases, as they may find it more difficult to borrow money to continue or expand operations, or may have difficulty in repaying any loans.

**Value Style Investing** A value stock may not increase in price as anticipated by the investment manager if other investors fail to recognize the company’s value and bid up the price, the markets favor faster-growing companies, or the factors that the investment manager believes will increase the price of the security do not occur.

**Management** The Fund is subject to management risk because it is an actively managed investment portfolio. The Fund’s investment manager applies investment techniques and risk analyses in making investment decisions for the Fund, but there can be no guarantee that these decisions will produce the desired results.

**Focus** To the extent that the Fund focuses on particular countries, regions, industries, sectors or types of investment from time to time, the Fund may be subject to greater risks of adverse developments in such areas of focus than a fund that invests in a wider variety of countries, regions, industries, sectors or investments.

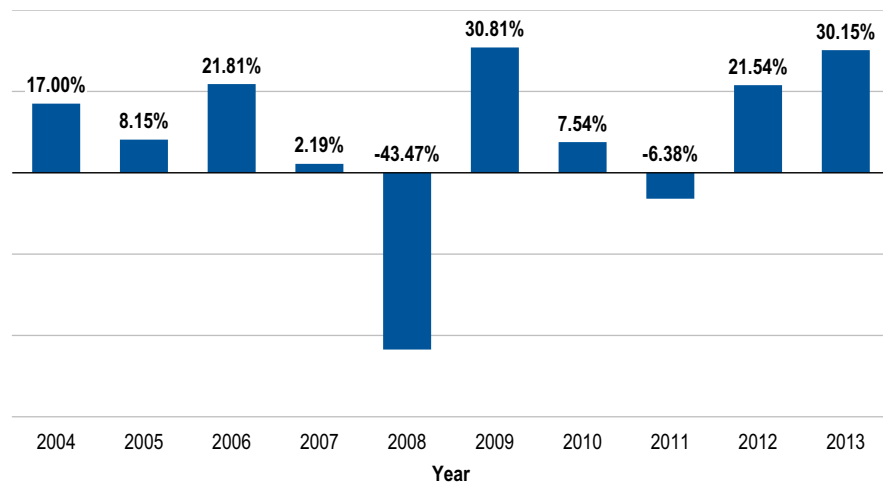
## Performance

The following bar chart and table provide some indication of the risks of investing in the Fund. The bar chart shows changes in the Fund’s performance from year to year for Class A shares. The table shows how the Fund’s average annual returns

for 1 year, 5 years, 10 years or since inception, as applicable, compared with those of a broad measure of market performance. The Fund's past performance (before and after taxes) is not necessarily an indication of how the Fund will perform in the future. You can obtain updated performance information at [franklintempleton.com](http://franklintempleton.com) or by calling (800) DIAL BEN/342-5236.

Sales charges are not reflected in the bar chart, and if those charges were included, returns would be less than those shown.

### Class A Annual Total Returns



|                |       |         |
|----------------|-------|---------|
| Best Quarter:  | Q2'09 | 20.40%  |
| Worst Quarter: | Q4'08 | -22.29% |

As of September 30, 2014, the Fund's year-to-date return was 0.76%.

### Average Annual Total Returns

(figures reflect sales charges)

For the periods ended December 31, 2013

|  | 1 Year | 5 Years | 10 Years |
|--|--------|---------|----------|
| <b>Templeton Growth Fund, Inc. - Class A</b>                               |        |         |          |
| Return Before Taxes  | 22.64% | 14.44%  | 5.74%    |
| Return After Taxes on Distributions  | 22.41% | 14.30%  | 5.23%    |
| Return After Taxes on Distributions and Sale of Fund Shares                | 13.23% | 11.85%  | 4.89%    |
| <b>Templeton Growth Fund, Inc. - Class C</b>                               |        |         |          |
|  | 28.13% | 14.94%  | 5.58%    |
| <b>Templeton Growth Fund, Inc. - Class R</b>                               |        |         |          |
|  | 29.77% | 15.50%  | 6.11%    |
| <b>Templeton Growth Fund, Inc. - Advisor Class</b>                         |        |         |          |
|  | 30.46% | 16.10%  | 6.64%    |
| MSCI World Index (index reflects no deduction for fees, expenses or taxes) | 27.36% | 15.68%  | 7.55%    |

Performance information for Class R6 shares is not shown because this class did not have a full calendar year of operations as of the date of this prospectus.

The after-tax returns are calculated using the historical highest individual federal marginal income tax rates and do not reflect the impact of state and local taxes. Actual after-tax returns depend on an investor's tax situation and may differ from those shown. After-tax returns are not relevant to investors who hold their Fund shares through tax-deferred arrangements, such as 401(k) plans or individual retirement accounts. After-tax returns are shown only for Class A and after-tax returns for other classes will vary.

## Investment Manager

Templeton Global Advisors Limited (Global Advisors)

## Portfolio Managers

### Norman J. Boersma, CFA

President, Chief Executive Officer and Director of Global Advisors and portfolio manager of the Fund since 2011.

### Lisa F. Myers, J.D., CFA

Executive Vice President of Global Advisors and portfolio manager of the Fund since 2003.

### **Tucker Scott, CFA**

Executive Vice President of Global Advisors and portfolio manager of the Fund since 2007.

### **James Harper, CFA**

Senior Vice President of Global Advisors and portfolio manager of the Fund since 2010.

### **Heather Arnold, CFA**

Executive Vice President, Director of Research and Portfolio Manager of Global Advisors and portfolio manager of the Fund since 2014.

## **Purchase and Sale of Fund Shares**

You may purchase or redeem shares of the Fund on any business day online through our website at [franklintempleton.com](http://franklintempleton.com), by mail (Franklin Templeton Investor Services, P.O. Box 33030, St. Petersburg, FL 33733-8030), or by telephone at (800) 632-2301. For Class A, C and R, the minimum initial purchase for most accounts is \$1,000 (or \$50 under an automatic investment plan). Class R6 and Advisor Class are only available to certain qualified investors and the minimum initial investment will vary depending on the type of qualified investor, as described under “Your Account — Choosing a Share Class — Qualified Investors — Class R6” and “— Advisor Class” in the Fund’s prospectus.

## **Taxes**

The Fund’s distributions are generally taxable to you as ordinary income, capital gains, or some combination of both, unless you are investing through a tax-deferred arrangement, such as a 401(k) plan or an individual retirement account, in which case your distributions would generally be taxed when withdrawn from the tax-deferred account.

## **Payments to Broker-Dealers and Other Financial Intermediaries**

If you purchase the Fund through a broker-dealer or other financial intermediary (such as a bank), the Fund and its related companies may pay the intermediary for the sale of Fund shares and related services. These payments may create a conflict of interest by influencing the broker-dealer or other intermediary and your salesperson to recommend the Fund over another investment. Ask your financial advisor or visit your financial intermediary’s website for more information.

## **Fund Details**

### **Investment Goal**

The Fund’s investment goal is long-term capital growth.

### **Principal Investment Policies and Practices**

Under normal market conditions, the Fund invests primarily in the equity securities of companies located anywhere in the world, including developing markets.

An equity security represents a proportionate share of the ownership of a company; its value is based on the success or failure of the company’s business, any income paid to stockholders, the value of its assets and general market conditions. Common stocks and preferred stocks, and securities convertible into common stocks, are examples of equity securities. The Fund may invest in convertible securities without regard to the ratings assigned by the rating services. The Fund may invest in companies of any size, including small and medium capitalization companies. The Fund also invests in depositary receipts. These are certificates typically issued by a bank or trust company that give their holders the right to receive securities issued by a foreign or domestic company.

In addition to the Fund’s main investments, depending upon current market conditions, the Fund may invest in debt securities of companies and governments located anywhere in the world. Debt securities represent the obligation of the issuer to repay a loan of money to it, and generally pay interest to the holder. Bonds, notes and debentures are examples of debt securities. Although the Fund seeks investments across a number of countries and sectors, from time to time, based on economic conditions, the Fund may have significant positions in particular countries or sectors such as healthcare and financial institutions.

When choosing equity investments for the Fund, the investment manager applies a “bottom-up,” value-oriented, long-term approach, focusing on the market price of a company’s securities relative to the investment manager’s evaluation of the company’s long-term earnings, asset value and cash flow potential. The investment manager also considers a company’s price/earnings ratio, price/cash flow ratio, profit margins and liquidation value.

The investment manager may consider selling an equity security when it believes the security has become overvalued due to either its price appreciation or changes in the company’s fundamentals, or when the investment manager believes another security is a more attractive investment opportunity.

### Temporary Investments

When the investment manager believes market or economic conditions are unfavorable for investors, the investment manager may invest up to 100% of the Fund's assets in a temporary defensive manner by holding all or a substantial portion of its assets in cash, cash equivalents or other high quality short-term investments. Temporary defensive investments generally may include U.S. government securities, bank time deposits denominated in the currency of any major nation, commercial paper, and repurchase agreements. The investment manager also may invest in these types of securities or hold cash while looking for suitable investment opportunities or to maintain liquidity. In these circumstances, the Fund may be unable to achieve its investment goal.

## Principal Risks

### Market

The market values of securities or other investments owned by the Fund will go up or down, sometimes rapidly or unpredictably. Securities or other investments may decline in value due to factors affecting individual issuers, securities markets generally or sectors within the securities markets. The value of a security may go up or down due to general market conditions which are not specifically related to a particular issuer, such as real or perceived adverse economic conditions, changes in interest rates or exchange rates, or adverse investor sentiment generally. The value may also go up or down due to factors that affect an individual issuer or a particular sector. During a general downturn in the securities markets, multiple asset classes may decline in value. When markets perform well, there can be no assurance that securities or other investments held by the Fund will participate in or otherwise benefit from the advance.

Stock prices tend to go up and down more dramatically than those of debt securities. A slower-growth or recessionary economic environment could have an adverse effect on the prices of the various stocks held by the Fund.

### Foreign Securities

Investing in foreign securities typically involves more risks than investing in U.S. securities. Certain of these risks also may apply to securities of U.S. companies with significant foreign operations.

**Currency exchange rates.** Foreign securities may be issued and traded in foreign currencies. As a result, their market values in U.S. dollars may be affected by changes in exchange rates between such foreign currencies and the U.S. dollar, as well as between currencies of countries other than the U.S. For example, if the value of the U.S. dollar goes up compared to a foreign currency, an investment

traded in that foreign currency will go down in value because it will be worth fewer U.S. dollars. The Fund accrues additional expenses when engaging in currency exchange transactions, and valuation of the Fund's foreign securities may be subject to greater risk because both the currency (relative to the U.S. dollar) and the security must be considered.

**Political and economic developments.** The political, economic and social policies or structures of some foreign countries may be less stable and more volatile than those in the United States. Investments in these countries may be subject to greater risks of internal and external conflicts, expropriation, nationalization of assets, foreign exchange controls (such as suspension of the ability to transfer currency from a given country), restrictions on removal of assets, political or social instability, military action or unrest, diplomatic developments, currency devaluations, foreign ownership limitations, and punitive or confiscatory tax increases. It is possible that a government may take over the assets or operations of a company or impose restrictions on the exchange or export of currency or other assets. Some countries also may have different legal systems that may make it difficult or expensive for the Fund to vote proxies, exercise shareholder rights, and pursue legal remedies with respect to its foreign investments. Diplomatic and political developments could affect the economies, industries, and securities and currency markets of the countries in which the Fund is invested. These developments include rapid and adverse political changes; social instability; regional conflicts; sanctions imposed by the United States, other nations or other governmental entities, including supranational entities; terrorism; and war. In addition, such developments could contribute to the devaluation of a country's currency, a downgrade in the credit ratings of issuers in such country, or a decline in the value and liquidity of securities of issuers in that country. An imposition of sanctions upon certain issuers in a country could result in an immediate freeze of that issuer's securities, impairing the ability of the Fund to buy, sell, receive or deliver those securities. These factors would affect the value of the Fund's investments and are extremely difficult, if not impossible, to predict and take into account with respect to the Fund's investments.

**Trading practices.** Brokerage commissions, withholding taxes, custodial fees, and other fees generally are higher in foreign markets. The policies and procedures followed by foreign stock exchanges, currency markets, trading systems and brokers may differ from those applicable in the United States, with possibly negative consequences to the Fund. The procedures and rules governing foreign trading, settlement and custody (holding of the Fund's assets) also may result in losses or delays in payment, delivery or recovery of money or other property. Foreign government supervision and regulation of foreign securities markets and



trading systems may be less than or different from government supervision in the United States, and may increase the Fund's regulatory and compliance burden and/or decrease the Fund's investor rights and protections.

**Availability of information.** Foreign issuers may not be subject to the same disclosure, accounting, auditing and financial reporting standards and practices as U.S. issuers. Thus, there may be less information publicly available about foreign issuers than about most U.S. issuers.

**Limited markets.** Certain foreign securities may be less liquid (harder to sell) and their prices may be more volatile than many U.S. securities. Illiquidity tends to be greater, and valuation of the Fund's foreign securities may be more difficult, due to the infrequent trading and/or delayed reporting of quotes and sales.

**Regional.** Adverse conditions in a certain region or country can adversely affect securities of issuers in other countries whose economies appear to be unrelated. To the extent that the Fund invests a significant portion of its assets in a specific geographic region or a particular country, the Fund will generally have more exposure to the specific regional or country economic risks. In the event of economic or political turmoil or a deterioration of diplomatic relations in a region or country where a substantial portion of the Fund's assets are invested, the Fund may experience substantial illiquidity or reduction in the value of the Fund's investments.

### Developing Markets

**Developing market countries.** The Fund's investments in developing market countries are subject to all of the risks of foreign investing generally, and have additional heightened risks due to a lack of established legal, political, business and social frameworks to support securities markets. Some of the additional significant risks include:

- less social, political and economic stability;
- smaller securities markets with low or nonexistent trading volume and greater illiquidity and price volatility;
- more restrictive national policies on foreign investment, including restrictions on investment in issuers or industries deemed sensitive to national interests;
- less transparent and established taxation policies;
- less developed regulatory or legal structures governing private and foreign investment or allowing for judicial redress for injury to private property, such as bankruptcy;

- less familiarity with a capital market structure or market-oriented economy and more widespread corruption and fraud;
- less financial sophistication, creditworthiness and/or resources possessed by, and less government regulation of, the financial institutions and issuers with which the Fund transacts;
- less government supervision and regulation of business and industry practices, stock exchanges, brokers and listed companies than in the U.S.;
- greater concentration in a few industries resulting in greater vulnerability to regional and global trade conditions;
- higher rates of inflation and more rapid and extreme fluctuations in inflation rates;
- greater sensitivity to interest rate changes;
- increased volatility in currency exchange rates and potential for currency devaluations and/or currency controls;
- greater debt burdens relative to the size of the economy;
- more delays in settling portfolio transactions and heightened risk of loss from share registration and custody practices; and
- less assurance that recent favorable economic developments will not be slowed or reversed by unanticipated economic, political or social events in such countries.

Because of the above factors, the Fund's investments in developing market countries may be subject to greater price volatility and illiquidity than investments in developed markets.

The definition of developing market countries or companies as used in this prospectus may differ from the definition of the same terms as used in other Franklin Templeton fund prospectuses.

### Smaller and Midsize Companies

Securities issued by smaller and midsize companies may be more volatile in price than those of larger companies, involve substantial risks and should be considered speculative. Such risks may include greater sensitivity to economic conditions, less certain growth prospects, and lack of depth of management and funds for growth and development. They may also have limited product lines or be developing or marketing new products or services for which markets are not yet established and may never become established. In addition, smaller and midsize companies may be



particularly affected by interest rate increases, as they may find it more difficult to borrow money to continue or expand operations, or may have difficulty in repaying any loans.

### Value Style Investing

Value stock prices are considered “cheap” relative to the company’s perceived value and are often out of favor with other investors. The investment manager may invest in such stocks if it believes the market may have overreacted to adverse developments or failed to appreciate positive changes. However, if other investors fail to recognize the company’s value (and do not become buyers, or if they become sellers or favor investing in faster growing companies), value stocks may not increase in value as anticipated by the investment manager and may even decline in value.

### Management

The Fund is actively managed and could experience losses if the investment manager’s judgment about markets, interest rates or the attractiveness, relative values, liquidity, or potential appreciation of particular investments made for the Fund’s portfolio prove to be incorrect. There can be no guarantee that these techniques or the investment manager’s investment decisions will produce the desired results. Additionally, legislative, regulatory, or tax developments may affect the investment techniques available to the investment manager in connection with managing the Fund and may also adversely affect the ability of the Fund to achieve its investment goal.

### Focus

The greater the Fund’s exposure to any single type of investment – including investment in a given industry, sector, region, country, issuer, or type of security – the greater the losses the Fund may experience upon any single economic, business, political, regulatory, or other occurrence. As a result, there may be more fluctuation in the price of the Fund’s shares.

### Depository Receipts

Depository receipts are subject to many of the risks of the underlying security. For some depository receipts, the custodian or similar financial institution that holds the issuer’s shares in a trust account is located in the issuer’s home country. The Fund could be exposed to the credit risk of the custodian or financial institution, and in cases where the issuer’s home country does not have developed financial markets, greater market risk. In addition, the depository institution may not have physical custody of the underlying securities at all times and may charge fees for various services, including forwarding dividends and interest and corporate actions. The

Fund would be expected to pay a share of the additional fees, which it would not pay if investing directly in the foreign securities. The Fund may experience delays in receiving its dividend and interest payments or exercising rights as a shareholder.

Depository receipts will be issued under sponsored or unsponsored programs. In sponsored programs, an issuer has made arrangements to have its securities traded in the form of depository receipts. In unsponsored programs, the issuer may not be directly involved in the creation of the program.

### Interest Rate

Interest rate changes can be sudden and unpredictable, and are influenced by a number of factors including government policy, monetary policy, inflation expectations, perceptions of risk, and supply and demand of bonds. Changes in government monetary policy, including changes in tax policy or changes in a central bank’s implementation of specific policy goals, may have a substantial impact on interest rates. There can be no guarantee that any particular government or central bank policy will be continued, discontinued or changed nor that any such policy will have the desired effect on interest rates. Debt securities generally tend to lose market value when interest rates rise and increase in value when interest rates fall. A rise in interest rates also has the potential to cause investors to rapidly move out of fixed-income securities, which may increase redemptions in the Fund. A substantial increase in interest rates may also have an adverse impact on the liquidity of a security, especially those with longer maturities. Securities with longer maturities or lower coupons or that make little (or no) interest payments before maturity tend to be more sensitive to these interest rate changes. The longer the Fund’s average weighted portfolio maturity, the greater the impact a change in interest rates will have on its share price.

### Credit

The Fund could lose money on a debt security if an issuer or borrower is unable or fails to meet its obligations, including failing to make interest payments and/or to repay principal when due. Changes in an issuer’s financial strength, the market’s perception of the issuer’s financial strength or in a security’s credit rating, which reflects a third party’s assessment of the credit risk presented by a particular issuer, may affect debt securities’ values. The Fund may incur substantial losses on debt securities that are inaccurately perceived to present a different amount of credit risk by the market, the investment manager or the rating agencies than such securities actually do.

More detailed information about the Fund, its policies and risks can be found in the Fund’s Statement of Additional Information (SAI).

A description of the Fund's policies and procedures regarding the release of portfolio holdings information is also available in the Fund's SAI. Portfolio holdings information can be viewed online at [franklintempleton.com](http://franklintempleton.com).

## Management

Templeton Global Advisors Limited (Global Advisors), Lyford Cay, Nassau, Bahamas, is the Fund's investment manager. Together, Global Advisors and its affiliates manage as of November 30, 2014, over \$899 billion in assets, and have been in the investment management business since 1947.

The Fund is managed by a team of dedicated professionals focused on investments in equity securities. The portfolio managers of the team are as follows:

### **Norman J. Boersma, CFA** President, Chief Executive Officer and Director of Global Advisors

Mr. Boersma has been lead portfolio manager of the Fund since 2011. He has primary responsibility for the investments of the Fund. He has final authority over all aspects of the Fund's investment portfolio, including but not limited to, purchases and sales of individual securities, portfolio risk assessment, and the management of daily cash balances in accordance with anticipated investment management requirements. The degree to which he may perform these functions, and the nature of these functions, may change from time to time. He joined Franklin Templeton Investments in 1991.

### **Lisa F. Myers, J.D., CFA** Executive Vice President of Global Advisors

Ms. Myers has been a portfolio manager of the Fund since 2003 providing research and advice on the purchases and sales of individual securities, and portfolio risk assessment. She joined Franklin Templeton Investments in 1996.

### **Tucker Scott, CFA** Executive Vice President of Global Advisors

Mr. Scott has been a portfolio manager of the Fund since 2007, providing research and advice on the purchases and sales of individual securities, and portfolio risk assessment. He joined Franklin Templeton Investments in 1996.

### **James Harper, CFA** Senior Vice President of Global Advisors

Mr. Harper has been a portfolio manager of the Fund since 2010, providing research and advice on the purchases and sales of individual securities, and portfolio risk assessment. He joined Franklin Templeton Investments in 2007.

### **Heather Arnold, CFA** Executive Vice President, Director of Research and Portfolio Manager of Global Advisors

Ms. Arnold has been a portfolio manager of the Fund since 2014, providing research and advice on the purchases and sales of individual securities, and portfolio risk assessment. She first joined Franklin Templeton Investments in 1997, left in 2001 to start her own company and rejoined again in 2008.

CFA® and Chartered Financial Analyst® are trademarks owned by CFA Institute.

The Fund's SAI provides additional information about portfolio manager compensation, other accounts that they manage and their ownership of Fund shares.

The Fund pays Global Advisors a fee for managing the Fund's assets. For the fiscal year ended August 31, 2014, the Fund paid 0.67% of its average daily net assets to the manager for its services.

Effective July 1, 2014, the Fund's investment management agreement was bundled with its fund administration agreement, including the fees payable to the Fund's administrator thereunder, as approved by the board of directors. The fee payable to the administrator under the Fund's administration agreement, prior to July 1, 2014, was a fee equal to the annual rate of:

- 0.150% of average daily net assets up to and including \$200 million;
- 0.135% of average daily net assets over \$200 million, up to and including \$700 million;
- 0.100% of average daily net assets over \$700 million, up to and including \$1.2 billion; and
- 0.075% of average daily net assets over \$1.2 billion.

Effective July 1, 2014, the Fund's investment management fees became:

- 0.780% up to and including \$200 million;
- 0.765% over \$200 million, up to and including \$700 million;
- 0.730% over \$700 million, up to and including \$1 billion;
- 0.715% over \$1 billion, up to and including \$1.2 billion;
- 0.690% over \$1.2 billion, up to and including \$5 billion;
- 0.675% over \$5 billion, up to and including \$10 billion;
- 0.655% over \$10 billion, up to and including \$15 billion;
- 0.635% over \$15 billion, up to and including \$20 billion;
- 0.615% over \$20 billion, up to and including \$25 billion;

- 0.605% over \$25 billion, up to and including \$30 billion;
- 0.595% over \$30 billion, up to and including \$35 billion;
- 0.585% over \$35 billion, up to and including \$40 billion;
- 0.575% over \$40 billion, up to and including \$45 billion; and
- 0.565% in excess of \$45 billion.

A discussion regarding the basis for the board of directors approving the investment management contract of the Fund is available in the Fund's annual report to shareholders for the fiscal year ended August 31.

## Distributions and Taxes

### Income and Capital Gain Distributions

As a regulated investment company, the Fund generally pays no federal income tax on the income and gains it distributes to you. The Fund intends to pay income dividends at least annually from its net investment income. Capital gains, if any, may be paid at least annually. The Fund may distribute income dividends and capital gains more frequently, if necessary, in order to reduce or eliminate federal excise or income taxes on the Fund. The amount of any distribution will vary, and there is no guarantee the Fund will pay either income dividends or capital gain distributions. Your income dividends and capital gain distributions will be automatically reinvested in additional shares at net asset value (NAV) unless you elect to receive them in cash.

**Annual statements.** After the close of each calendar year, you will receive tax information from the Fund with respect to the federal income tax treatment of the Fund's distributions and any taxable sales or exchanges of Fund shares occurring during the prior calendar year. If the Fund finds it necessary to reclassify its distributions or adjust the cost basis of any covered shares sold or exchanged after you receive your tax information, the Fund will send you revised tax information. Distributions declared in December to shareholders of record in such month and paid in January are taxable as if they were paid in December. Additional tax information about the Fund's distributions is available at [franklintempleton.com](http://franklintempleton.com).

**Avoid "buying a dividend."** At the time you purchase your Fund shares, the Fund's net asset value may reflect undistributed income, undistributed capital gains, or net unrealized appreciation in the value of the portfolio securities held by the Fund. For taxable investors, a subsequent distribution to you of such amounts, although constituting a return of your investment, would be taxable. Buying shares in the Fund just before it declares an income dividend or capital gain distribution is sometimes known as "buying a dividend."

### Tax Considerations

If you are a taxable investor, Fund distributions are generally taxable to you as ordinary income, capital gains or some combination of both. This is the case whether you reinvest your distributions in additional Fund shares or receive them in cash.

**Dividend income.** Income dividends are generally subject to tax at ordinary rates. Income dividends reported by the Fund to shareholders as qualified dividend income may be subject to tax by individuals at reduced long-term capital gains tax rates provided certain holding period requirements are met. A return-of-capital distribution is generally not taxable but will reduce the cost basis of your shares, and will result in a higher capital gain or a lower capital loss when you later sell your shares.

**Capital gains.** Fund distributions of short-term capital gains are also subject to tax at ordinary rates. Fund distributions of long-term capital gains are taxable at the reduced long-term capital gains rates no matter how long you have owned your Fund shares. For individuals in the 10% and 15% tax brackets, the long-term capital gains tax rate is 0%. For individuals in higher tax brackets, the long-term capital gains rate is 15% (20% for certain high income taxpayers). An additional 3.8% Medicare tax may also be imposed as discussed below.

**Sales of Fund shares.** When you sell your shares in the Fund, or exchange them for shares of a different Franklin Templeton fund, you will generally recognize a taxable capital gain or loss. If you have owned your Fund shares for more than one year, any net long-term capital gains will qualify for the reduced rates of taxation on long-term capital gains. An exchange of your shares in one class of the Fund for shares of another class of the same Fund is not taxable and no gain or loss will be reported on the transaction.

**Cost basis reporting.** If you acquire shares in the Fund on or after January 1, 2012, generally referred to as "covered shares," and sell or exchange them after that date, the Fund is generally required to report cost basis information to you and the IRS annually. The Fund will compute the cost basis of your covered shares using the average cost method, the Fund's "default method," unless you contact the Fund to select a different method, or choose to specifically identify your shares at the time of each sale or exchange. If your account is held by your financial advisor or other broker-dealer, that firm may select a different default method. In these cases, please contact the firm to obtain information with respect to the available methods and elections for your account. Shareholders should carefully review the cost basis information provided by the Fund and make any additional basis, holding period or

other adjustments that are required when reporting these amounts on their federal and state income tax returns. Additional information about cost basis reporting is available at [franklintempleton.com/costbasis](http://franklintempleton.com/costbasis).

**Medicare tax.** An additional 3.8% Medicare tax will be imposed on certain net investment income (including ordinary dividends and capital gain distributions received from the Fund and net gains from redemptions or other taxable dispositions of Fund shares) of U.S. individuals, estates and trusts to the extent that such person's "modified adjusted gross income" (in the case of an individual) or "adjusted gross income" (in the case of an estate or trust) exceeds a threshold amount. Any liability for this additional Medicare tax will be reported on, and paid with, your federal income tax return.

**Backup withholding.** A shareholder may be subject to backup withholding on any distributions of income, capital gains, or proceeds from the sale or exchange of Fund shares if the shareholder (1) has provided either an incorrect tax identification number or no number at all, (2) is subject to backup withholding by the IRS for failure to properly report payments of interest or dividends, (3) has failed to certify that the shareholder is not subject to backup withholding, or (4) has not certified that the shareholder is a U.S. person (including a U.S. resident alien). The backup withholding rate is currently 28%. State backup withholding may also apply.

**State, local and foreign taxes.** Distributions of ordinary income and capital gains, and gains from the sale of your Fund shares, are generally subject to state and local taxes. If the Fund qualifies, it may elect to pass through to you as a foreign tax credit or deduction any foreign taxes that it pays on its investments.

**Non-U.S. investors.** Non-U.S. investors may be subject to U.S. withholding tax at 30% or a lower treaty rate on Fund dividends of ordinary income. Non-U.S. investors may be subject to U.S. estate tax on the value of their shares. They are subject to special U.S. tax certification requirements to avoid backup withholding, claim any exemptions from withholding and claim any treaty benefits. An exemption from U.S. withholding tax is provided for capital gain dividends paid by the Fund from long-term capital gains, if any. The exemptions from U.S. withholding for interest-related dividends paid by the Fund from its qualified net interest income from U.S. sources and short-term capital gain dividends have expired for taxable years of the Fund that begin on or after January 1, 2014. It is unclear as of the date of this prospectus whether Congress will reinstate the exemptions for interest-related and short-term capital gain dividends or, if reinstated, whether such exemptions would have retroactive effect. However, notwithstanding such exemptions from U.S. withholding tax at source, any such

dividends and distributions of income and capital gains will be subject to backup withholding at a rate of 28% if you fail to properly certify that you are not a U.S. person.

**Other reporting and withholding requirements.** Payments to a shareholder that is either a foreign financial institution (FFI) or a non-financial foreign entity (NFFE) within the meaning of the Foreign Account Tax Compliance Act (FATCA) may be subject to a 30% withholding tax on: (a) income dividends paid by the Fund after June 30, 2014, and (b) certain capital gain distributions and the proceeds arising from the sale of Fund shares paid by the Fund after December 31, 2016. FATCA withholding tax generally can be avoided: (a) by an FFI, subject to any applicable intergovernmental agreement or other exemption, if it enters into a valid agreement with the IRS to, among other requirements, report required information about certain direct and indirect ownership of foreign financial accounts held by U.S. persons with the FFI and (b) by an NFFE, if it: (i) certifies that it has no substantial U.S. persons as owners or (ii) if it does have such owners, reports information relating to them. The Fund may disclose the information that it receives from its shareholders to the IRS, non-U.S. taxing authorities or other parties as necessary to comply with FATCA. Withholding also may be required if a foreign entity that is a shareholder of the Fund fails to provide the Fund with appropriate certifications or other documentation concerning its status under FATCA.

**Other tax information.** This discussion of "Distributions and Taxes" is for general information only and is not tax advice. You should consult your own tax advisor regarding your particular circumstances, and about any federal, state, local and foreign tax consequences before making an investment in the Fund. Additional information about the tax consequences of investing in the Fund may be found in the SAI.

## Financial Highlights

The Financial Highlights present the Fund's financial performance for the past five years or since its inception. Certain information reflects financial results for a single Fund share. The total returns represent the rate that an investor would have earned or lost on an investment in the Fund assuming reinvestment of dividends and capital gains. This information has been audited by PricewaterhouseCoopers LLP, an independent registered public accounting firm, whose report, along with the Fund's financial statements, are included in the annual report, which is available upon request.

**Class A**  
**Year Ended August 31,**

|  | 2014               | 2013               | 2012               | 2011                | 2010                 |
|--|--------------------|--------------------|--------------------|---------------------|----------------------|
| Per share operating performance<br>(for a share outstanding throughout the year) |                    |                    |                    |                     |                      |
| Net asset value, beginning of year   | \$22.13            | \$18.04            | \$17.05            | \$15.28             | \$15.55              |
| Income from investment operations: <sup>a</sup>                                  |                    |                    |                    |                     |                      |
| Net investment income <sup>b</sup>   | 0.55 <sup>c</sup>  | 0.30               | 0.35               | 0.31                | 0.24                 |
| Net realized and unrealized gains (losses)                                       | 3.68               | 4.15               | 1.01               | 1.74                | (0.25)               |
| Total from investment operations   | 4.23               | 4.45               | 1.36               | 2.05                | (0.01)               |
| Less distributions from net investment income                                    | (0.31)             | (0.36)             | (0.37)             | (0.28)              | (0.26)               |
| <b>Net asset value, end of year</b>  | <b>\$26.05</b>     | <b>\$22.13</b>     | <b>\$18.04</b>     | <b>\$17.05</b>      | <b>\$15.28</b>       |
| Total return <sup>d</sup>  | 19.22%             | 25.00%             | 8.17%              | 13.38%              | (0.21)%              |
| Ratios to average net assets   |                    |                    |                    |                     |                      |
| Expenses   | 1.03%              | 1.07% <sup>e</sup> | 1.11% <sup>e</sup> | 1.08% <sup>e</sup>  | 1.10% <sup>e,f</sup> |
| Net investment income  | 2.18% <sup>c</sup> | 1.47%              | 2.03%              | 1.71%               | 1.50%                |
| Supplemental data  |                    |                    |                    |                     |                      |
| Net assets, end of year (000's)  | \$14,138,298       | \$12,970,707       | \$11,582,174       | \$11,865,049        | \$11,954,334         |
| Portfolio turnover rate  | 17.17%             | 12.46%             | 13.47%             | 21.60% <sup>g</sup> | 9.21%                |

a. The amount shown for a share outstanding throughout the period may not correlate with the Statement of Operations in the annual report for the period due to the timing of sales and repurchases of the Fund shares in relation to income earned and/or fluctuating fair value of the investments of the Fund.

b. Based on average daily shares outstanding.

c. Net investment income per share includes approximately \$0.19 per share received in the form of special dividend paid in connection with certain Fund's holdings. Excluding these amounts, the ratio of net investment income to average net assets would have been 1.43%.

d. Total return does not reflect sales commissions or contingent deferred sales charges, if applicable.

e. Benefit of expense reduction rounds to less than 0.01%.

f. Benefit of waiver and payments by affiliates rounds to less than 0.01%.

g. Excludes the value of portfolio securities delivered as a result of a redemption in-kind.

**Class C**  
**Year Ended August 31,**

|  | 2014               | 2013               | 2012               | 2011                | 2010                 |
|--|--------------------|--------------------|--------------------|---------------------|----------------------|
| Per share operating performance<br>(for a share outstanding throughout the year) |                    |                    |                    |                     |                      |
| Net asset value, beginning of year   | \$21.53            | \$17.56            | \$16.58            | \$14.87             | \$15.14              |
| Income from investment operations: <sup>a</sup>                                  |                    |                    |                    |                     |                      |
| Net investment income <sup>b</sup>   | 0.35 <sup>c</sup>  | 0.14               | 0.21               | 0.17                | 0.12                 |
| Net realized and unrealized gains (losses)                                       | 3.58               | 4.05               | 0.99               | 1.69                | (0.25)               |
| Total from investment operations   | 3.93               | 4.19               | 1.20               | 1.86                | (0.13)               |
| Less distributions from net investment income                                    | (0.14)             | (0.22)             | (0.22)             | (0.15)              | (0.14)               |
| <b>Net asset value, end of year</b>  | <b>\$25.32</b>     | <b>\$21.53</b>     | <b>\$17.56</b>     | <b>\$16.58</b>      | <b>\$14.87</b>       |
| Total return <sup>d</sup>  | 18.30%             | 24.07%             | 7.39%              | 12.47%              | (0.91)%              |
| Ratios to average net assets   |                    |                    |                    |                     |                      |
| Expenses   | 1.78%              | 1.82% <sup>e</sup> | 1.86% <sup>e</sup> | 1.83% <sup>e</sup>  | 1.85% <sup>e,f</sup> |
| Net investment income  | 1.43% <sup>c</sup> | 0.72%              | 1.28%              | 0.96%               | 0.75%                |
| Supplemental data  |                    |                    |                    |                     |                      |
| Net assets, end of year (000's)  | \$900,525          | \$800,312          | \$722,614          | \$810,279           | \$888,857            |
| Portfolio turnover rate  | 17.17%             | 12.46%             | 13.47%             | 21.60% <sup>g</sup> | 9.21%                |

a. The amount shown for a share outstanding throughout the period may not correlate with the Statement of Operations in the annual report for the period due to the timing of sales and repurchases of the Fund shares in relation to income earned and/or fluctuating fair value of the investments of the Fund.

b. Based on average daily shares outstanding.

c. Net investment income per share includes approximately \$0.19 per share received in the form of special dividend paid in connection with certain Fund's holdings. Excluding these amounts, the ratio of net investment income to average net assets would have been 0.68%.

d. Total return does not reflect sales commissions or contingent deferred sales charges, if applicable.

e. Benefit of expense reduction rounds to less than 0.01%.

f. Benefit of waiver and payments by affiliates rounds to less than 0.01%.

g. Excludes the value of portfolio securities delivered as a result of a redemption in-kind.

**Class R**  
**Year Ended August 31,**

|  | 2014               | 2013               | 2012               | 2011                | 2010                 |
|--|--------------------|--------------------|--------------------|---------------------|----------------------|
| Per share operating performance<br>(for a share outstanding throughout the year) |                    |                    |                    |                     |                      |
| Net asset value, beginning of year   | \$21.91            | \$17.86            | \$16.88            | \$15.13             | \$15.40              |
| Income from investment operations: <sup>a</sup>                                  |                    |                    |                    |                     |                      |
| Net investment income <sup>b</sup>   | 0.48 <sup>c</sup>  | 0.25               | 0.30               | 0.26                | 0.20                 |
| Net realized and unrealized gains (losses)                                       | 3.64               | 4.12               | 1.00               | 1.73                | (0.25)               |
| Total from investment operations   | 4.12               | 4.37               | 1.30               | 1.99                | (0.05)               |
| Less distributions from net investment income                                    | (0.25)             | (0.32)             | (0.32)             | (0.24)              | (0.22)               |
| <b>Net asset value, end of year</b>  | <b>\$25.78</b>     | <b>\$21.91</b>     | <b>\$17.86</b>     | <b>\$16.88</b>      | <b>\$15.13</b>       |
| Total return   | 18.88%             | 24.72%             | 7.87%              | 13.08%              | (0.44)%              |
| Ratios to average net assets   |                    |                    |                    |                     |                      |
| Expenses   | 1.28%              | 1.32% <sup>d</sup> | 1.36% <sup>d</sup> | 1.33% <sup>d</sup>  | 1.35% <sup>d,e</sup> |
| Net investment income  | 1.93% <sup>c</sup> | 1.22%              | 1.78%              | 1.46%               | 1.25%                |
| Supplemental data  |                    |                    |                    |                     |                      |
| Net assets, end of year (000's)  | \$155,334          | \$146,530          | \$136,909          | \$150,841           | \$163,865            |
| Portfolio turnover rate  | 17.17%             | 12.46%             | 13.47%             | 21.60% <sup>f</sup> | 9.21%                |

a. The amount shown for a share outstanding throughout the period may not correlate with the Statement of Operations in the annual report for the period due to the timing of sales and repurchases of the Fund shares in relation to income earned and/or fluctuating fair value of the investments of the Fund.

b. Based on average daily shares outstanding.

c. Net investment income per share includes approximately \$0.19 per share received in the form of special dividend paid in connection with certain Fund's holdings. Excluding these amounts, the ratio of net investment income to average net assets would have been 1.18%.

d. Benefit of expense reduction rounds to less than 0.01%.

e. Benefit of waiver and payments by affiliates rounds to less than 0.01%.

f. Excludes the value of portfolio securities delivered as a result of a redemption in-kind.

**Class R6**  
**Year Ended August 31,**

|  | 2014               | 2013 <sup>a</sup>  |
|--|--------------------|--------------------|
| Per share operating performance<br>(for a share outstanding throughout the year) |                    |                    |
| Net asset value, beginning of year   | \$22.16            | \$21.34            |
| Income from investment operations: <sup>b</sup>                                  |                    |                    |
| Net investment income <sup>c</sup>   | 0.63 <sup>d</sup>  | 0.17               |
| Net realized and unrealized gains (losses)                                       | 3.68               | 0.65               |
| Total from investment operations   | 4.31               | 0.82               |
| Less distributions from net investment income                                    | (0.39)             | —                  |
| <b>Net asset value, end of year</b>  | <b>\$26.08</b>     | <b>\$22.16</b>     |
| Total return <sup>a</sup>  | 19.60%             | 3.84%              |
| Ratios to average net assets <sup>f</sup>  |                    |                    |
| Expenses   | 0.69%              | 0.71% <sup>g</sup> |
| Net investment income  | 2.52% <sup>d</sup> | 1.83%              |
| Supplemental data  |                    |                    |
| Net assets, end of year (000's)  | \$2,363,855        | \$2,042,413        |
| Portfolio turnover rate  | 17.17%             | 12.46%             |

a. For the period May 1, 2013 (effective date) to August 31, 2013.

b. The amount shown for a share outstanding throughout the period may not correlate with the Statement of Operations in the annual report for the period due to the timing of sales and repurchases of the Fund shares in relation to income earned and/or fluctuating fair value of the investments of the Fund.

c. Based on average daily shares outstanding.

d. Net investment income per share includes approximately \$0.19 per share received in the form of special dividend paid in connection with certain Fund's holdings. Excluding these amounts, the ratio of net investment income to average net assets would have been 1.77%.

e. Total return is not annualized for periods less than one year.

f. Ratios are annualized for periods less than one year.

g. Benefit of expense reduction rounds to less than 0.01%.

## Advisor Class

Year Ended August 31,

|  | 2014               | 2013               | 2012               | 2011                | 2010                 |
|--|--------------------|--------------------|--------------------|---------------------|----------------------|
| Per share operating performance<br>(for a share outstanding throughout the year) |                    |                    |                    |                     |                      |
| Net asset value, beginning of year   | \$22.15            | \$18.06            | \$17.07            | \$15.30             | \$15.56              |
| Income from investment operations: <sup>a</sup>                                  |                    |                    |                    |                     |                      |
| Net investment income <sup>b</sup>   | 0.59 <sup>c</sup>  | 0.31               | 0.38               | 0.35                | 0.28                 |
| Net realized and unrealized gains (losses)                                       | 3.71               | 4.19               | 1.02               | 1.75                | (0.25)               |
| Total from investment operations   | 4.30               | 4.50               | 1.40               | 2.10                | 0.03                 |
| Less distributions from net investment income                                    | (0.32)             | (0.41)             | (0.41)             | (0.33)              | (0.29)               |
| <b>Net asset value, end of year</b>  | <b>\$26.13</b>     | <b>\$22.15</b>     | <b>\$18.06</b>     | <b>\$17.07</b>      | <b>\$15.30</b>       |
| Total return   | 19.55%             | 25.28%             | 8.47%              | 13.65%              | 0.07%                |
| Ratios to average net assets   |                    |                    |                    |                     |                      |
| Expenses   | 0.78%              | 0.82% <sup>d</sup> | 0.86% <sup>d</sup> | 0.83% <sup>d</sup>  | 0.85% <sup>d,e</sup> |
| Net investment income  | 2.43% <sup>c</sup> | 1.72%              | 2.28%              | 1.96%               | 1.75%                |
| Supplemental data  |                    |                    |                    |                     |                      |
| Net assets, end of year (000's)  | \$429,080          | \$425,222          | \$2,355,806        | \$2,589,977         | \$2,851,417          |
| Portfolio turnover rate  | 17.17%             | 12.46%             | 13.47%             | 21.60% <sup>f</sup> | 9.21%                |

a. The amount shown for a share outstanding throughout the period may not correlate with the Statement of Operations in the annual report for the period due to the timing of sales and repurchases of the Fund shares in relation to income earned and/or fluctuating fair value of the investments of the Fund.

b. Based on average daily shares outstanding.

c. Net investment income per share includes approximately \$0.19 per share received in the form of special dividend paid in connection with certain Fund's holdings. Excluding these amounts, the ratio of net investment income to average net assets would have been 1.68%.

d. Benefit of expense reduction rounds to less than 0.01%.

e. Benefit of waiver and payments by affiliates rounds to less than 0.01%.

f. Excludes the value of portfolio securities delivered as a result of a redemption in-kind.

## Your Account

### Choosing a Share Class

Each class has its own sales charge and expense structure, allowing you to choose the class that best meets your situation. Your investment representative (financial advisor) can help you decide. Investors may purchase Class C or Class R shares only for Fund accounts on which they have appointed an investment representative (financial advisor) of record. Investors who have not appointed an investment representative (financial advisor) to existing Class C or Class R share Fund accounts may not make additional purchases to those accounts but may exchange their shares for shares of a Franklin Templeton fund that offers Class C or Class R shares. Dividend and capital gain distributions may continue to be reinvested in existing Class C or Class R share Fund accounts. These provisions do not apply to Employer Sponsored Retirement Plans.

| Class A   | Class C   | Class R  | Class R6                                   | Advisor Class                                   |
|---|---|--|--|---|
| Initial sales charge of 5.75% or less   | No initial sales charge   | No initial sales charge  | See "Qualified Investors - Class R6" below | See "Qualified Investors - Advisor Class" below |
| Deferred sales charge of 1% on purchases of \$1 million or more sold within 18 months | Deferred sales charge of 1% on shares you sell within 12 months     | Deferred sales charge is not applicable  |  |   |
| Lower annual expenses than Class C or R due to lower distribution fees                | Higher annual expenses than Class A due to higher distribution fees | Higher annual expenses than Class A due to higher distribution fees (lower than Class C) |  |   |



## Class A, C & R

### Sales Charges - Class A

| when you invest this amount     | the sales charge makes up this % of the offering price <sup>1</sup> | which equals this % of your net investment <sup>1</sup> |
|---------------------------------|---|---|
| Under \$50,000                  | 5.75  | 6.10  |
| \$50,000 but under \$100,000    | 4.50  | 4.71  |
| \$100,000 but under \$250,000   | 3.50  | 3.63  |
| \$250,000 but under \$500,000   | 2.50  | 2.56  |
| \$500,000 but under \$1 million | 2.00  | 2.04  |

1. The dollar amount of the sales charge is the difference between the offering price of the shares purchased (which factors in the applicable sales charge in this table) and the net asset value of those shares. Since the offering price is calculated to two decimal places using standard rounding criteria, the number of shares purchased and the dollar amount of the sales charge as a percentage of the offering price and of your net investment may be higher or lower depending on whether there was a downward or upward rounding.

### Sales Charge Reductions

**Quantity discounts.** We offer two ways for you to combine your current purchase of Class A Fund shares with other existing Franklin Templeton fund share holdings that might enable you to qualify for a lower sales charge with your current purchase. You can qualify for a lower sales charge when you reach certain “sales charge breakpoints.” This quantity discount information is also available free of charge at [franklintempleton.com/retail/jsp\\_cm/fund\\_perf/pub/quantity\\_discount.jsp](http://franklintempleton.com/retail/jsp_cm/fund_perf/pub/quantity_discount.jsp). This web page can also be reached at [franklintempleton.com](http://franklintempleton.com) by clicking the “Funds” tab and then choosing “Quantity Discounts.”

**1. Cumulative quantity discount** - lets you combine certain existing holdings of Franklin Templeton fund shares - referred to as “cumulative quantity discount eligible shares” - with your current purchase of Class A shares to determine if you qualify for a sales charge breakpoint.

Cumulative quantity discount eligible shares are Franklin Templeton fund shares registered to (or held by a financial intermediary for):

- You, individually;
- Your spouse or domestic partner, as recognized by applicable state law, and your children under the age of 21 (each a “family member”);
- You jointly with one or more family members;
- You jointly with another person(s) who is (are) not family members if that other person has not included the value of the shares as cumulative quantity discount eligible shares for purposes of that person’s separate investments in Franklin Templeton fund shares;

- A Coverdell Education Savings account for which you or a family member is the identified responsible person;
- A trustee/custodian of an IRA (which includes a Roth IRA and an employer sponsored IRA such as a SIMPLE IRA) or your non-ERISA covered 403(b) plan account, if the shares are registered/recorded under your or a family member’s Social Security number;
- A 529 college savings plan over which you or a family member has investment discretion and control;
- Any entity over which you or a family member has (have) individual or shared authority, as principal, has investment discretion and control (for example, an UGMA/UTMA account for a child on which you or a family member is the custodian, a trust on which you or a family member is the trustee, a business account [not to include retirement plans] for your solely owned business [or the solely owned business of a family member] on which you or a family member is the authorized signer);
- A trust established by you or a family member as grantor.

Franklin Templeton fund shares held through an administrator or trustee/custodian of an Employer Sponsored Retirement Plan (see definition below) such as a 401(k) plan do not qualify for a cumulative quantity discount.

Franklin Templeton fund assets held in multiple Employer Sponsored Retirement Plans may be combined in order to qualify for sales charge breakpoints at the plan level if the plans are sponsored by the same employer.

If you believe there are cumulative quantity discount eligible shares that can be combined with your current purchase to achieve a sales charge breakpoint (for example, shares held in a different broker-dealer’s brokerage account or with a bank or an investment advisor), it is your responsibility to specifically identify those shares to your financial advisor at the time of your purchase (including at the time of any future purchase). It may be necessary for you to provide your financial advisor with information and records (including account statements) of all relevant accounts invested in the Franklin Templeton funds. If you have not designated a financial advisor associated with your Franklin Templeton fund shares, it is your responsibility to specifically identify any cumulative quantity discount eligible shares to the Fund’s transfer agent at the time of any purchase.

If there are cumulative quantity discount eligible shares that would qualify for combining with your current purchase and you do not tell your financial advisor or the Franklin Templeton funds' transfer agent at the time of any purchase, you may not receive the benefit of a reduced sales charge that might otherwise be available since your financial advisor and the Fund generally will not have that information.

The value of cumulative quantity discount eligible shares equals the cost or current value of those shares, whichever is higher. The current value of shares is determined by multiplying the number of shares by their highest current public offering price. It is your responsibility to retain any records necessary to substantiate historical share costs because neither your current financial advisor nor the Franklin Templeton funds may have or maintain this information.

An "Employer Sponsored Retirement Plan" is a Qualified Retirement Plan, ERISA covered 403(b) plan and certain non-qualified deferred compensation arrangements that operate in a similar manner to a Qualified Retirement Plan, such as 457 plans and executive deferred compensation arrangements, but not including employer sponsored IRAs. A "Qualified Retirement Plan" is an employer sponsored pension or profit sharing plan that qualifies under section 401(a) of the Internal Revenue Code, including 401(k), money purchase pension, profit sharing and defined benefit plans.

**2. Letter of intent (LOI)** - expresses your intent to buy a stated dollar amount of "cumulative quantity discount eligible shares" (as defined in the "Cumulative quantity discount" section above) over a 13-month period and lets you receive the same sales charge as if all shares had been purchased at one time. We will reserve 5% of your total intended purchase in Class A shares registered in your name until you fulfill your LOI to cover any additional sales charge that may apply if you do not buy the amount stated in your LOI. It is your responsibility to tell your financial advisor when you believe you have fulfilled your LOI with sufficient cumulative quantity discount eligible shares. If you have not designated a financial advisor associated with your Franklin Templeton fund shares, it is your responsibility to tell the Fund's transfer agent when you believe you have fulfilled your LOI with sufficient cumulative quantity discount eligible shares. Please refer to the SAI for more LOI details.

To sign up for these programs, complete the appropriate section of your account application.

**Franklin Templeton funds** include all of the U.S. registered mutual funds of Franklin Templeton Investments and the Franklin Mutual Recovery Fund. They do not include the funds in the Franklin Templeton Variable Insurance Products Trust.

## Sales Charge Waivers

Class A shares may be purchased without an initial sales charge or contingent deferred sales charge (CDSC) by certain investors. If you would like information about available sales charge waivers, call your investment representative or call Shareholder Services at (800) 632-2301.

**Waivers for certain investors.** The following investors or investments qualify to buy Class A shares without an initial sales charge or CDSC due to anticipated economies in sales efforts and expenses, including:

- Governments, municipalities, and tax-exempt entities that meet the requirements for qualification under section 501 of the Internal Revenue Code when purchasing direct from the Fund. Please consult your legal and investment advisors to determine if an investment in the Fund is permissible and suitable for you.
- Registered securities dealers and their affiliates, for their investment accounts only.
- Current employees of securities dealers and their affiliates and their family members, as allowed by the internal policies of their employer.
- Current and former officers, trustees, directors, full-time employees (and, in each case, their family members) of both Franklin Templeton Investments and Franklin Templeton funds, consistent with our then-current policies.
- Current partners of law firms that currently provide legal counsel to the funds, Franklin Resources, Inc. or its affiliates.
- Assets held in accounts managed by a subsidiary of Franklin Resources, Inc.: (1) under an advisory agreement (including sub-advisory agreements); and/or (2) as trustee of an inter vivos or testamentary trust.
- Any trust or plan established as part of a qualified tuition program under Section 529 of the Internal Revenue Code, as amended.
- Group annuity separate accounts offered to retirement plans.
- Chilean retirement plans that meet the requirements described under "Retirement plans" below.
- German insurance companies that maintain variable annuities or unit linked life policies in Germany and that have entered into an agreement with Distributors or Franklin Templeton Investment Services GmbH.
- Banks and securities institutions investing assets held in a fiduciary, agency, advisory, custodial or similar capacity and over which they have full and exclusive investment discretion and that have entered into an agreement with

Distributors or Franklin Templeton Investment Services GmbH. Such purchases are subject to minimum investment requirements, which are available from Distributors or Franklin Templeton Investment Services GmbH.

- Purchases by a bank, trust company or thrift institution which is acting as a fiduciary exercising investment discretion, provided that appropriate notification of such fiduciary relationship is reported at the time of the investment.
- Advisory Fee Programs. Shares acquired by an investor in connection with a comprehensive fee or other advisory fee arrangement between the investor and a registered broker-dealer or investment advisor, trust company or bank (referred to as the “Sponsor”) in which the investor pays that Sponsor a fee for investment advisory services and the Sponsor or a broker-dealer through whom the shares are acquired has an agreement with Distributors authorizing the sale of Fund shares. No minimum initial investment.

Class C shares may be purchased without limit or CDSC by the Franklin Templeton Charitable Giving Fund.

**Retirement plans.** Provided that Franklin Templeton Investor Services, LLC is notified, Class A shares at NAV are available for:

- Employer Sponsored Retirement Plans (“Plans” or individually, “Plan”) that invest through a record-keeper platform or third party retirement platform; or
- Investors who open an IRA as a spousal rollover or a Qualified Domestic Relations Order (QDRO) if opened with proceeds from an IRA for which FTB&T is trustee.

#### Investments of \$1 Million or More

If you invest \$1 million or more, either as a lump sum or through our cumulative quantity discount or letter of intent programs, you can buy Class A shares without an initial sales charge. However, there is a 1% CDSC on any shares you sell within 18 months of purchase. The way we calculate the CDSC is the same for each class (please see “Contingent Deferred Sales Charge (CDSC) - Class A & C”).

#### Distribution and Service (12b-1) Fees

Class A has a distribution plan, sometimes known as a Rule 12b-1 plan, that allows the Fund to pay distribution fees of up to 0.25% per year to those who sell and distribute Class A shares and provide other services to shareholders. Because these fees are paid out of Class A’s assets on an ongoing basis, over time these fees will increase the cost of your investment and may cost you more than paying other types of sales charges.

We calculate the amount of these fees over a 12-month period that may differ from the Fund’s fiscal year. Therefore, the amount shown from time to time in the Fund’s fee table (which is based upon the Fund’s fiscal year) may differ from the amount set forth in the Rule 12b-1 plan due to timing differences.

#### Sales Charges - Class C

With Class C shares, there is no initial sales charge.

We place any investment of \$1 million or more in Class A shares, since Class A’s annual expenses are lower.

#### CDSC

There is a 1% CDSC on any Class C shares you sell within 12 months of purchase. The way we calculate the CDSC is the same for each class (please see “Contingent Deferred Sales Charge (CDSC) - Class A & C”).

#### Distribution and Service (12b-1) Fees

Class C has a distribution plan, sometimes known as a Rule 12b-1 plan, that allows the Fund to pay distribution and other fees of up to 1% per year for the sale of Class C shares and for services provided to shareholders. Because these fees are paid out of Class C’s assets on an ongoing basis, over time these fees will increase the cost of your investment and may cost you more than paying other types of sales charges.

#### Sales Charges - Class R

With Class R shares, there is no initial sales charge.

#### Retirement Plans

Class R shares are available to the following investors:

- Employer Sponsored Retirement Plans
- Any trust or plan established as part of a qualified tuition program under Section 529 of the Internal Revenue Code
- Health Reimbursement Accounts and Health Savings Accounts, either as a direct investment or as a separate or managed account.

#### Distribution and Service (12b-1) Fees

Class R has a distribution plan, sometimes known as a Rule 12b-1 plan, that allows the Fund to pay distribution and other fees of up to 0.50% per year for the sale of Class R shares and for services provided to shareholders. Because these fees are paid out of Class R’s assets on an ongoing basis, over time these fees will increase the cost of your investment and may cost you more than paying other types of sales charges.

### Contingent deferred sales charge (CDSC) - Class A and C

The CDSC for each class is based on the current value of the shares being sold or their net asset value when purchased, whichever is less. There is no CDSC on shares you acquire by reinvesting your dividends or capital gain distributions.

To keep your CDSC as low as possible, each time you place a request to sell shares we will first sell any shares in your account that are not subject to a CDSC. If there are not enough of these to meet your request, we will sell the shares in the order they were purchased. We will use this same method if you exchange your shares into another Franklin Templeton fund (please see “Exchanging Shares”).

The **holding period for the CDSC** begins on the day you buy your shares. Your shares will age one month on that same date the next month and each following month. For example, if you buy shares on the 18th of the month, they will age one month on the 18th day of the next month and each following month.

### Reinstatement Privilege

If you sell any class of shares of a Franklin Templeton Investment Fund, you may reinvest all or a portion of the proceeds from that sale within 90 days within the same share class without an initial sales charge. If at the time of investment your shares are registered directly with the Fund’s transfer agent: Class C or Class R shares will be reinvested in Class A shares if the account does not have an investment representative of record; and, proceeds from the earlier sale of Class Z shares from another fund may also be reinvested in Class A shares.

This Reinstatement Privilege does not apply to: (i) a purchase of Fund shares made through a regularly scheduled automatic investment plan such as a purchase by a regularly scheduled payroll deduction or transfer from a bank account, or (ii) a purchase of Fund shares with proceeds from the sale of Franklin Templeton fund shares that were held indirectly through a non-Franklin Templeton individual or employer sponsored IRA.

Generally, if you paid a CDSC when you sold your Class A or Class C shares, Franklin Templeton Distributors, Inc. (Distributors) will credit back to you the CDSC paid on the amount you are reinvesting within 90 days of the sale by adding it to the amount of your reinvestment. For Class A shares reinvested with a CDSC credit, a new CDSC will apply and the CDSC holding period will begin again. For Class C shares reinvested with a CDSC credit in Class A shares, you will not receive a CDSC credit in the new Class A shares and your reinvestment will not be subject to any otherwise applicable CDSC.

### Qualified Investors - Class R6

Class R6 shares are available to the following investors:

- Employer Sponsored Retirement Plans where plan level or omnibus accounts are held on the books of Franklin Templeton Investor Services.
- Endowments; foundations; local, city and state governmental institutions; corporations; non-profit organizations that are organized as corporations; and insurance companies, (collectively “institutional investors”) when purchasing directly from a Fund. The minimum initial investment for institutional investors is \$1,000,000 per Fund.
- Unaffiliated U.S. registered mutual funds, including those that operate as “fund of funds.”
- Other Franklin Templeton funds and funds for which Franklin Templeton investment managers provide advisory or subadvisory services.

### Qualified Investors - Advisor Class

The following investors or investments qualify to buy Advisor Class shares of the Fund:

- Advisory Fee Programs. Shares acquired by an investor in connection with a comprehensive fee or other advisory fee arrangement between the investor and a registered broker-dealer or investment advisor, trust company or bank (referred to as the “Sponsor”) in which the investor pays that Sponsor a fee for investment advisory services and the Sponsor or a broker-dealer through whom the shares are acquired has an agreement with Distributors authorizing the sale of Fund shares. No minimum initial investment.
- Governments, municipalities, and tax-exempt entities that meet the requirements for qualification under section 501 of the Internal Revenue Code when purchasing direct from the Fund. Minimum initial investment: \$1 million in Advisor Class or Class Z shares of any Franklin Templeton fund.
- Current and former officers, trustees, directors, full-time employees (and, in each case, their family members) of both Franklin Templeton Investments and Franklin Templeton funds, consistent with our then-current policies. Minimum initial investment: \$1,000 (\$50 for accounts with an automatic investment plan).
- Assets held in accounts managed by a subsidiary of Franklin Resources, Inc.: (1) under an advisory agreement (including sub-advisory agreements); and/or (2) as trustee of an inter vivos or testamentary trust.
- Employer Sponsored Retirement Plans (“Plans” or individually, “Plan”) that invest through a record-keeper or third party retirement platform.
- Plans with aggregate plan assets of \$1 million or more invested directly with Franklin Templeton Investment Funds.

- Any trust or plan established as part of a qualified tuition program under Section 529 of the Internal Revenue Code, provided that Distributors or an affiliate of Distributors has entered into a contract with the state sponsor of the program or one of its service providers to provide certain services relating to the operation of the program or to provide Fund shares for purchase in connection with the program. No initial minimum investment.
- An individual or entity associated with a current customer of Franklin Templeton Institutional, LLC (FTI, LLC) if approved by FTI, LLC in consultation with its customer.
- Unaffiliated U.S. registered mutual funds, including those that operate as “fund of funds.”
- Assets held in accounts under the recommendation of an investment consultant provided that (1) assets are held with a firm unaffiliated with the investment consultant’s firm; (2) the investment consultant is under a retainer or other similar fee arrangement with its clients; (3) the client is not an individual; and (4) a subsidiary of Franklin Resources, Inc. approves the investment.

## Buying Shares

### Minimum Investments - Class A, C & R

|   | Initial    |
|---|------------|
| Regular accounts, UGMA/UTMA accounts, current and former full-time employees, officers, trustees and directors of Franklin Templeton entities, and their family members | \$1,000    |
| Automatic investment plans  | \$50       |
| Employer Sponsored Retirement Plans, SIMPLE-IRAs, SEP-IRAs, SARSEPs or 403(b) plan accounts   | no minimum |
| IRAs, IRA rollovers, Coverdell Education Savings Plans or Roth IRAs   | \$250      |
| Broker-dealer sponsored wrap account programs   | no minimum |

Please note that you may only buy shares (including the purchase side of an exchange) of a fund eligible for sale in your state or jurisdiction. The Fund and other Franklin Templeton funds are intended for sale to residents of the United States, and, with very limited exceptions, are not registered or otherwise offered for sale in other jurisdictions.

In particular, the Fund is not registered in any provincial or territorial jurisdiction in Canada, and shares of the Fund have not been qualified for sale in any Canadian jurisdiction. The shares offered by this prospectus may not be directly or indirectly offered or sold in any provincial or territorial jurisdiction in Canada or to or for the benefit of residents thereof. Prospective investors may be required to declare that they are not Canadian residents and are not acquiring shares on behalf of any Canadian residents. Similarly, the Fund is not registered, and shares of the Fund have not been qualified for distribution, in any member country of the European Union (EU) or European Economic Area (EEA), and may not be directly or indirectly offered or distributed in any such country. If an investor becomes a Canadian, EU or EEA resident after purchasing shares of the Fund, the investor will not be able to purchase any additional shares of the Fund (other than reinvestment of dividends and capital gains) or exchange shares of the Fund for other U.S. registered Franklin Templeton funds.



## Account Application

If you are opening a new account, please complete and sign the enclosed account application. Make sure you indicate the share class you have chosen. If you do not indicate a class, we will place your purchase in Class A shares. To save time, you can sign up now for services you may want on your account by completing the appropriate sections of the application (see “Investor Services”). For example, if you would like to link one of your bank accounts to your Fund account so that you may use electronic funds transfer to and from your bank account to buy and sell shares, please complete the bank information section of the application. We will keep your bank information on file for future purchases and redemptions. We do not accept cash, credit card convenience checks, non-bank money orders or travelers checks as forms of payment to purchase shares.

Franklin Templeton Investor Services  
P.O. Box 33030  
St. Petersburg, FL 33733-8030  
Call toll-free: (800) 632-2301  
(Monday through Friday  
5:30 a.m. to 5:00 p.m., Pacific time)  
or visit us online 24 hours a day,  
7 days a week, at franklintempleton.com

## Buying Shares

|  | Opening an account  | Adding to an account  |
|--|---|---|
| Through your investment representative   | Contact your investment representative  | Contact your investment representative  |
| <b>By Phone/Online</b><br>(800) 632-2301<br>franklintempleton.com<br><i>Note: certain account types are not available for online account access.</i> | If you have another Franklin Templeton fund account with your bank account information on file, you may open a new identically registered account by phone. At this time, a new account may not be opened online.<br>To make a same day investment, your phone order must be received and accepted by us prior to 1:00 p.m. Pacific time or the close of the New York Stock Exchange, whichever is earlier.               | Before requesting a telephone or online purchase into an existing account, please make sure we have your bank account information on file. If we do not have this information, you will need to send written instructions with your bank's name and address and a voided check or savings account deposit slip. If there is a difference between the Fund account owner(s) and the bank account owner(s), your written request must be signed by <b>all</b> Fund <b>and</b> bank account owners, and each individual must have his or her signature guaranteed. If the Fund account is registered to FTB&T as custodian/trustee for a retirement plan or education savings account, or as a custodial account for a minor (UGMA/UTMA) and there is at least one common owner on the Fund account and the bank account, signature guarantees are not required.<br>To make a same day investment, your phone or online order must be received and accepted by us prior to 1:00 p.m. Pacific time or the close of the New York Stock Exchange, whichever is earlier. |
| By Mail  | Make your check payable to the Fund.<br>Mail the check and your signed application to Investor Services.  | Make your check payable to the Fund. Include your account number on the check.<br>Fill out the deposit slip from your account statement. If you do not have a slip, include a note with your name, the Fund name, and your account number.<br>Mail the check and deposit slip or note to Investor Services.   |
| <b>By Wire</b><br>(800) 632-2301<br>or (650) 312-2000 collect  | Call to receive a wire control number and wire instructions.<br>Wire the funds and mail your signed application to Investor Services. Please include the wire control number or your new account number on the application.<br>To make a same day wire investment, the wired funds must be received and accepted by us prior to 1:00 p.m. Pacific time or the close of the New York Stock Exchange, whichever is earlier. | Call to receive a wire control number and wire instructions.<br>To make a same day wire investment, the wired funds must be received and accepted by us prior to 1:00 p.m. Pacific time or the close of the New York Stock Exchange, whichever is earlier.  |
| <b>By Exchange</b><br>franklintempleton.com  | Call Shareholder Services at (800) 632-2301, or send signed written instructions. You also may place an online exchange order.<br>(Please see “Exchanging Shares” for more information on exchanges.)   | Call Shareholder Services at (800) 632-2301, or send signed written instructions. You also may place an online exchange order.<br>(Please see “Exchanging Shares” for more information on exchanges.)   |

## Investor Services

### Automatic Investment Plan

This plan offers a convenient way for you to invest in the Fund by automatically transferring money from your checking or savings account each month to buy shares. To sign up, visit us online at [franklintempleton.com](http://franklintempleton.com) or complete the appropriate section of your account application and mail it to Investor Services. If you are opening a new account, please include your minimum initial investment with your application.

### Automated Telephone System

Our automated system offers around-the-clock access to information about your account or any Franklin Templeton fund. This service is available by dialing any of the following numbers from a touch-tone phone:

|                      |                |
|----------------------|----------------|
| Shareholder Services | (800) 632-2301 |
| Advisor Services     | (800) 524-4040 |
| Retirement Services  | (800) 527-2020 |

### Distribution Options

You may reinvest distributions you receive from the Fund in an existing account in the same share class\* of the Fund or another Franklin Templeton fund. Initial sales charges and CDSCs will not apply to reinvested distributions. You also can have your distributions deposited in a bank account, or mailed by check. Deposits to a bank account may be made by electronic funds transfer.

\*Class C shareholders may reinvest their distributions in Class A shares of any Franklin Templeton money fund. Advisor Class shareholders may reinvest in Advisor Class or Class A shares of another Franklin Templeton fund. To reinvest your distributions in Advisor Class shares of another Franklin Templeton fund, you must be a current shareholder in Advisor Class or otherwise qualify to buy that fund's Advisor Class shares.

If you received a distribution and chose to return it to purchase additional shares in Class A shares of another Franklin Templeton fund, you will not be charged an initial sales charge if you invest the distribution within 90 days of the distribution date.

Please indicate on your application the distribution option you have chosen, otherwise we will reinvest your distributions in the same share class of the Fund.

### Retirement Plans

Franklin Templeton Investments offers a variety of retirement plans for individuals and businesses. These plans require separate applications, may require special forms for redemptions, and their policies and procedures may be different

than those described in this prospectus. For more information, including a free retirement plan brochure or application, please call Retirement Services at (800) 527-2020.

### Telephone/Online Privileges

You will automatically receive telephone/online privileges when you open your account, allowing you to obtain or view your account information, and conduct a number of transactions by phone or online, including: buy, sell, or exchange shares of most funds; use electronic funds transfer to buy or sell shares of most funds; change your address; and add or change account services (including distribution options, systematic withdrawal plans and automatic investment plans).

To view your account information or request online transactions, you will first need to register for these services at the shareholder section of our website at [franklintempleton.com](http://franklintempleton.com). You will be asked to accept the terms of an online agreement(s) and establish a password for online services. If you are registered for online services, you may enroll online in Franklin Templeton's electronic delivery program for your shareholder documents. This will allow you to receive electronic delivery (through our website) of most Franklin Templeton funds' prospectuses, annual/semiannual reports to shareholders, and proxy statements, as well as your account(s) statements and trade confirmations, and discontinue receiving your paper copies through the U.S. mail. Using our shareholder website means you are consenting to sending and receiving personal financial information over the Internet, so you should be sure you are comfortable with the risks.

As long as we follow reasonable security procedures and act on instructions we reasonably believe are genuine, we will not be responsible for any losses that may occur from unauthorized requests. We will request passwords or other information, and also may record calls. To help safeguard your account, keep your password confidential, and verify the accuracy of your confirmation statements immediately after you receive them. Contact us immediately if you believe someone has obtained unauthorized access to your account or password. For transactions done over the Internet, we recommend the use of an Internet browser with 128-bit encryption. Certain methods of contacting us (such as by phone or by Internet) may be unavailable or delayed during periods of unusual market activity. *Of course, you can decline telephone buy, sell, or exchange privileges on your account application, or choose not to register for online privileges. If you have telephone/online privileges on your account and want to discontinue them, please contact us for instructions.* You may reinstate these privileges at any time in writing, including online registration with respect to online privileges.



**Note:** We discourage you from including confidential or sensitive information in any Internet communication to us. If you do choose to send email (encrypted or not) to us over the Internet, you are accepting the associated risks of lack of confidentiality.

### Systematic Withdrawal Plan

This plan allows you to automatically sell your shares and receive regular payments from your account. A CDSC may apply to withdrawals that exceed certain amounts. Certain terms and minimums apply. To sign up, visit us online at [franklintempleton.com](http://franklintempleton.com) or complete the appropriate section of your application.

### Franklin Templeton VIP Services®

You may be eligible for Franklin Templeton VIP Services® if you are currently eligible for the \$250,000 sales charge breakpoint based solely on shares registered directly with the Franklin Templeton funds' transfer agent and excluding shares held indirectly through brokerage accounts. Franklin Templeton VIP Services® shareholders enjoy enhanced service and transaction capabilities. Please contact Shareholder Services at (800) 632-2301 for additional information on this program.

## Selling Shares

You can sell your shares at any time. Please keep in mind that a contingent deferred sales charge (CDSC) may apply.

### Selling Shares in Writing

Generally, requests to sell \$100,000 or less can be made over the phone, online, or with a simple letter. Sometimes, however, to protect you and the Fund we will need written instructions signed by all registered owners, with a signature guarantee for each owner, if:

- you are selling more than \$100,000 worth of shares
- you want your proceeds paid to someone who is not a registered owner
- you want to send your proceeds somewhere other than the address of record, or preauthorized bank or brokerage firm account

We also may require a signature guarantee when: we receive instructions from an agent, not the registered owners; you want to send your proceeds to a bank account that was added or changed on your account without a signature guarantee within the last 15 days; you want to send proceeds to your address that was changed without a signature guarantee within the last 15 days; or we believe it would protect the Fund against potential claims based on the instructions received.

The amount may be higher for members of Franklin Templeton VIP Services®. Please see "Franklin Templeton VIP Services®" above for more information regarding eligibility.

A **signature guarantee** helps protect your account against fraud. You can obtain a signature guarantee at most banks and securities dealers.

A notary public CANNOT provide a signature guarantee.

### Selling Recently Purchased Shares

If you sell shares recently purchased, we may delay sending you the proceeds until your check, draft or wire/electronic funds transfer has cleared, which may take seven business days.

### Redemption Proceeds

Your redemption check will be sent within seven days after we receive your request in proper form. We are not able to receive or pay out cash in the form of currency.

### Retirement Plans

You may need to complete additional forms to sell shares in a Franklin Templeton Bank & Trust retirement plan. For participants under the age of 59½, tax penalties may apply. Call Retirement Services at (800) 527-2020 for details.

## Selling Shares

### To sell some or all of your shares

**Through your investment representative**  
Contact your investment representative

#### By Mail

Send written instructions and endorsed share certificates (if you hold share certificates) to Investor Services. Corporate, partnership or trust accounts may need to send additional documents.

Specify the Fund, the account number and the dollar value or number of shares you wish to sell. Be sure to include all necessary signatures and any additional documents, as well as signature guarantees if required.

A check will be mailed to the name(s) and address on the account, or otherwise according to your written instructions.

#### By Phone/Online

(800) 632-2301  
franklintempleton.com

As long as your transaction is for \$100,000 or less and you do not hold share certificates, you can sell your shares by phone or online. The amount may be higher for members of Franklin Templeton VIP Services®. Please see "Franklin Templeton VIP Services™" above for more information regarding eligibility.

A check will be mailed to the name(s) and address on the account, or a pre-authorized secondary address. Written instructions, with a signature guarantee, are required to send the check to another address or to make it payable to another person.

If you have changed your address within the last 15 days without a signature guarantee, requests to sell your shares and mail the check to the name(s) and address on the account must be in writing and we may require a signature guarantee. Requests to sell your shares and send the proceeds to a pre-authorized secondary address may be requested by phone or online.

#### By Electronic Funds Transfer (ACH)

You can call, write, or visit us online to have redemption proceeds sent to a bank account. See the policies at left for selling shares by mail, phone, or online.

Before requesting to have redemption proceeds sent to a bank account, please make sure we have your bank account information on file. If we do not have this information, you will need to send written instructions with your bank's name and a voided check or savings account deposit slip. If there is a difference between the Fund account owner(s) and the bank account owner(s), you must provide written instructions signed by **all** Fund **and** bank account owners, and each individual must have his or her signature guaranteed. If the Fund account is registered to FBT&T as custodian/trustee for a retirement plan or education savings account, or as a custodial account for a minor (UGMA/UTMA) and there is at least one common owner on the Fund account and the bank account, signature guarantees are not required.

If the bank account was added or changed without a signature guarantee within the last 15 days, you may be required to provide written instructions signed by all fund account owners, with a signature guarantee for each fund account owner.

If we receive your request in proper form prior to 1:00 p.m. Pacific time, proceeds sent by ACH generally will be available within two to three business days.

#### By Exchange

Obtain a current prospectus for the fund you are considering. Prospectuses are available online at franklintempleton.com.

Call Shareholder Services at the number below or send signed written instructions. You also may place an exchange order online. See the policies at left for selling shares by mail, phone, or online.

If you hold share certificates, you will need to return them to the Fund before your exchange can be processed.

Franklin Templeton Investor Services  
P.O. Box 33030, St. Petersburg, FL 33733-8030  
Call toll-free: (800) 632-2301  
(Monday through Friday 5:30 a.m. to 5:00 p.m., Pacific time)  
or visit us online 24 hours a day, 7 days a week, at franklintempleton.com

## Exchanging Shares

### Exchange Privilege

#### Class A, C & R

You can exchange shares between most Franklin Templeton funds within the same class,\* generally without paying any additional sales charges. If you exchange shares from a money fund and those shares were not charged a sales charge previously, however, a sales charge may apply.

\*Class Z shareholders of Franklin Mutual Series Funds may exchange into Class A without any sales charge. Advisor Class shareholders of another Franklin Templeton fund also may exchange into Class A without any sales charge. If you exchange into Class A shares and you later decide you would like to exchange into a fund that offers an Advisor Class or Class Z, you may exchange your Class A shares for Advisor Class or Class Z shares if you are a current shareholder in Advisor Class or Class Z or you otherwise qualify to buy the fund's Advisor Class or Class Z shares.

Any CDSC will continue to be calculated from the date of your initial investment and will not be charged at the time of the exchange. The purchase price for determining a CDSC on exchanged shares will be the price you paid for the original shares.

#### Class R6

You can exchange your Class R6 shares for Class R6 shares of other Franklin Templeton funds. You also may exchange your Class R6 shares for Advisor Class shares of a fund that does not currently offer Class R6 shares.

#### Advisor Class

You can exchange your Advisor Class shares for Advisor Class shares of other Franklin Templeton funds. You also may exchange your Advisor Class shares for Class A shares of a fund that does not currently offer an Advisor Class (without any sales charge)\* or for Class Z shares of Franklin Mutual Series Funds.

\*If you exchange into Class A shares and you later decide you would like to exchange into a fund that offers an Advisor Class, you may exchange your Class A shares for Advisor Class shares if you are a current shareholder in Advisor Class or you otherwise qualify to buy the fund's Advisor Class shares.

#### All Classes

The remainder of the "Exchanging Shares" section applies to all classes.

Generally exchanges may only be made between identically registered accounts, unless you send written instructions with a signature guarantee.

An **exchange** is really two transactions: a sale of one fund and the purchase of another. In general, the same policies that apply to purchases and sales also apply to exchanges, including minimum investment amounts (except exchanges of an entire account balance). Exchanges also generally have the same tax consequences as ordinary sales and purchases.

**Rejected exchanges.** If the Fund rejects an exchange request involving the sale of Fund shares, the rejected exchange request will also mean rejection of the request to purchase shares of another fund with the proceeds of the sale. Of course, you may generally redeem shares of the Fund at any time.

**Exchanges through financial intermediaries.** If you are investing indirectly in the Fund through a financial intermediary such as a broker-dealer, a bank, an insurance company separate account, an investment advisor, an administrator or trustee of an IRS-recognized tax-deferred savings plan such as a 401(k) retirement plan and a 529 college savings plan that maintains a master account (an Omnibus Account) with the Fund for trading on behalf of its customers, different exchange and/or transfer limit guidelines and restrictions may apply. The financial intermediary through whom you are investing may choose to adopt different trading restrictions designed to discourage short-term or excessive trading. Consult with your financial intermediary (or in the case of a 401(k) retirement plan, your plan sponsor) to determine what trading restrictions, including exchange/transfer limitations, may be applicable to you.

**Fund exchange privilege changes/waiver.** The Fund may terminate or modify (temporarily or permanently) this exchange privilege in the future. You will receive at least 60 days' notice of any material changes, unless otherwise provided by law.

**Other funds' exchange privileges.** If there is a conflict between the exchange privileges of two funds involved in an exchange transaction, the stricter policy will apply to the transaction. Other Franklin Templeton funds may have different exchange restrictions. Check each fund's prospectus for details.

### Frequent Trading Policy

The Fund's board of directors has adopted the following policies and procedures with respect to frequent trading in Fund shares (Frequent Trading Policy).

The Fund does not intend to accommodate short-term or frequent purchases and redemptions of Fund shares that may be detrimental to the Fund. For example, this type of trading activity could interfere with the efficient management of the Fund's portfolio or materially increase the Fund's transaction costs, administrative costs or taxes.

In addition, since the Fund may invest in foreign securities, it may be vulnerable to a form of short-term trading that is sometimes referred to as "time-zone arbitrage." Time-zone arbitrage occurs when an investor seeks to take advantage of delays between changes in the value of a mutual fund's portfolio holdings and the reflection of those changes in the Fund's net asset value per share. These delays are more likely to occur in the case of foreign investments, due to differences between the times during which the Fund's international portfolio securities trade on foreign

markets and the time as of which the Fund's NAV is calculated (generally as of the close of the NYSE - please see "Account Policies - Calculating Share Price"). Time-zone arbitrage traders seek to purchase or redeem shares of a fund based on events occurring after foreign market closing prices are established, but before calculation of the fund's NAV. This can result in the value of the Fund's shares being diluted. One of the objectives of the Fund's fair value pricing procedures is to minimize the possibility of this type of arbitrage (please see "Account Policies - Security Valuation - Foreign Securities - Potential Impact of Time Zones and Market Holidays"); however, there can be no assurance that the Fund's valuation procedures will be successful in eliminating it.

Through its transfer agent, the Fund performs ongoing monitoring of shareholder trading in shares of the Fund and other Franklin Templeton funds in order to try and identify shareholder trading patterns that suggest an ongoing short-term trading strategy. If shareholder trading patterns identified by the transfer agent through monitoring or from other information regarding the shareholder's trading activity in non-Franklin Templeton funds leads the transfer agent to reasonably conclude that such trading may be detrimental to the Fund as described in this Frequent Trading Policy, the transfer agent, on behalf of the Fund, may temporarily or permanently bar future purchases into the Fund or, alternatively, may limit the amount, number or frequency of any future purchases and/or the method by which you may request future purchases and redemptions (including purchases and/or redemptions by an exchange or transfer between the Fund and any other mutual fund).

In considering an investor's trading patterns, the Fund may consider, among other factors, the investor's trading history both directly and, if known, through financial intermediaries, in the Fund, in other Franklin Templeton funds, in non-Franklin Templeton mutual funds, or in accounts under common control or ownership (see, for example, "Buying and Selling Shares - Investment by asset allocators and large shareholders" in the SAI). The transfer agent may also reject any purchase or redemption request, whether or not it represents part of any ongoing trading pattern, if the Fund's investment manager or transfer agent reasonably concludes that the amount of the requested transaction may disrupt or otherwise interfere with the efficient management of the Fund's portfolio. In determining what actions should be taken, the Fund's transfer agent may consider a variety of factors, including the potential impact of such remedial actions on the Fund and its shareholders. If the Fund is a "fund of funds," the Fund's transfer agent may take into account the impact of the trading activity and of any proposed remedial action on both the Fund and the underlying funds in which the Fund invests.

**Frequent trading through financial intermediaries.** You are an investor subject to this Frequent Trading Policy whether you are a direct shareholder of the Fund or you are investing indirectly in the Fund through a financial intermediary, such as a broker-dealer, bank, trust company, insurance company product such as an annuity contract, investment advisor, or an administrator or trustee of an IRS-recognized tax-deferred savings plan such as a 401(k) retirement plan and a 529 college savings plan.

Some financial intermediaries maintain master accounts with the Fund on behalf of their customers (“omnibus accounts”). The Fund has entered into “information sharing agreements” with these financial intermediaries, which permit the Fund to obtain, upon request, information about the trading activity of the intermediary’s customers that invest in the Fund. If the Fund’s transfer agent identifies omnibus account level trading patterns that have the potential to be detrimental to the Fund, the transfer agent may, in its sole discretion, request from the financial intermediary information concerning the trading activity of its customers. Based upon its review of the information, if the transfer agent determines that the trading activity of any customer may be detrimental to the Fund, it may, in its sole discretion, request the financial intermediary to restrict or limit further trading in the Fund by that customer. There can be no assurance that the transfer agent’s monitoring of omnibus account level trading patterns will enable it to identify all short-term trading by a financial intermediary’s customers.

**Revocation of trades.** While the Fund reserves the right to reject any purchase order for any reason, the Fund may also revoke executed purchase orders that the transfer agent reasonably concludes in its sole discretion may have been contrary to the objectives of the Fund’s Frequent Trading Policy.

## Account Policies

### Calculating Share Price

#### Class A, C & R

When you buy shares, you pay the “offering price” for the shares. The “offering price” is determined by dividing the NAV per share by an amount equal to 1 minus the sales charge applicable to the purchase (expressed in decimals), calculated to two decimal places using standard rounding criteria. The number of Fund shares you will be issued will equal the amount invested divided by the applicable offering price for those shares, calculated to three decimal places using standard rounding criteria. For example, if the NAV per share is \$10.25 and the applicable sales charge for the purchase is 5.75%, the offering price would be calculated as follows:  $10.25 \div 1.00 \text{ minus } 0.0575 [10.25/0.9425]$  equals 10.87533, which, when rounded to two decimal points, equals 10.88. The offering price per share would be \$10.88.

When you sell shares, you receive the NAV minus any applicable CDSC.

#### All Classes

The value of a mutual fund is determined by deducting the fund’s liabilities from the total assets of the portfolio. The NAV per share is determined by dividing the total net asset value of each fund’s share class by the applicable number of shares outstanding per share class.

The Fund calculates the NAV per share each business day as of 1 p.m. Pacific time which normally coincides with the close of trading on the New York Stock Exchange (NYSE). The Fund does not calculate the NAV on days the NYSE is closed for trading, which include New Year’s Day, Martin Luther King Jr. Day, President’s Day, Good Friday, Memorial Day, Independence Day, Labor Day, Thanksgiving Day and Christmas Day. If the NYSE has a scheduled early close or unscheduled early close, the Fund’s share price would still be determined as of 1 p.m. Pacific time/4 p.m. Eastern time. The Fund’s NAV per share for each class is readily available online at [https://www.franklintempleton.com/retail/app/product/views/price\\_performance.jsf?menu=true](https://www.franklintempleton.com/retail/app/product/views/price_performance.jsf?menu=true).

Requests to buy and sell shares are processed at the NAV next calculated after we or an approved financial intermediary receive your request in proper form.

When determining its NAV, the Fund values cash and receivables at their realizable amounts, and records interest as accrued and dividends on the ex-dividend date. The Fund generally utilizes two independent pricing services to assist in determining a current market value for each security. If market quotations are readily available for portfolio securities listed on a securities exchange, the Fund

values those securities at the last quoted sale price or the official closing price of the day, respectively, or, if there is no reported sale, within the range of the most recent quoted bid and ask prices. The Fund values over-the-counter portfolio securities within the range of the most recent bid and ask prices. If portfolio securities trade both in the over-the-counter market and on a stock exchange, the Fund values them according to the broadest and most representative market.

Generally, trading in corporate bonds, U.S. government securities and money market instruments is substantially completed each day at various times before the close of the NYSE. The value of these securities used in computing the NAV is determined as of such times. Occasionally, events affecting the values of these securities may occur between the times at which they are determined and the close of the NYSE that will not be reflected in the computation of the NAV. The Fund relies on third-party pricing vendors to provide evaluated prices that reflect current fair market value at the close of the NYSE.

#### **Fair Valuation – Individual Securities**

Since the Fund may invest in securities that are restricted, unlisted, traded infrequently, thinly traded, or relatively illiquid, there is the possibility of a differential between the last available market prices for one or more of those securities and the latest indications of market values for those securities. The Fund has procedures, approved by the board of directors, to determine the fair value of individual securities and other assets for which market prices are not readily available (such as certain restricted or unlisted securities and private placements) or which may not be reliably priced (such as in the case of trade suspensions or halts, price movement limits set by certain foreign markets, and thinly traded or illiquid securities). Some methods for valuing these securities may include: fundamental analysis (earnings multiple, etc.), matrix pricing, discounts from market prices of similar securities, or discounts applied due to the nature and duration of restrictions on the disposition of the securities. The board of directors oversees the application of fair value pricing procedures.

The application of fair value pricing procedures represents a good faith determination based upon specifically applied procedures. There can be no assurance that the Fund could obtain the fair value assigned to a security if it were able to sell the security at approximately the time at which the Fund determines its NAV per share.

#### **Security Valuation – Corporate Debt Securities**

Corporate debt securities generally trade in the over-the-counter market rather than on a securities exchange. The Fund may value these portfolio securities by utilizing quotations from bond dealers, information with respect to bond and note

transactions and may rely on independent pricing services to assist in determining a current market value for each security. The Fund's pricing services may utilize independent quotations from bond dealers and bond market activity to determine current value.

#### **Security Valuation – Foreign Securities – Computation of U.S. Equivalent Value**

The Fund generally determines the value of a foreign security as of the close of trading on the foreign stock exchange on which the security is primarily traded, or as of the close of trading on the NYSE, if earlier. The value is then converted into its U.S. dollar equivalent at the foreign exchange rate in effect at the close of the NYSE (generally 1:00 p.m. Pacific time) on the day that the value of the foreign security is determined. If no sale is reported at that time, the foreign security will be valued within the range of the most recent quoted bid and ask prices. Occasionally events (such as repatriation limits or restrictions) may impact the availability or reliability of foreign exchange rates used to convert the U.S. dollar equivalent value. If such an event occurs, the foreign exchange rate will be valued at fair value using procedures established and approved by the board of directors.

#### **Security Valuation – Foreign Securities – Potential Impact of Time Zones and Market Holidays**

Trading in securities on foreign securities stock exchanges and over-the-counter markets, such as those in Europe and Asia, may be completed well before the close of business on the NYSE on each day that the NYSE is open. Occasionally, events occur between the time at which trading in a foreign security is completed and the close of the NYSE that might call into question the availability (including the reliability) of the value of a foreign portfolio security held by the Fund. As a result, the Fund may be susceptible to what is referred to as "time zone arbitrage." Certain investors in the Fund may seek to take advantage of discrepancies in the value of the Fund's portfolio securities as determined by the foreign market at its close and the latest indications of value attributable to the portfolio securities at the time the Fund's NAV is computed. Trading by these investors, often referred to as "arbitrage market timers," may dilute the value of the Fund's shares, if such discrepancies in security values actually exist. To attempt to minimize the possibilities for time zone arbitrage, and in accordance with procedures established and approved by the Fund's board of directors, the investment manager monitors price movements following the close of trading in foreign stock markets through a series of country specific market proxies (such as baskets of American Depositary Receipts, futures contracts and exchange traded funds).



These price movements are measured against established trigger thresholds for each specific market proxy to assist in determining if an event has occurred that might call into question the availability (including the reliability) of the values of foreign securities between the times at which they are determined and the close of the NYSE. If such an event occurs, the foreign securities may be valued using fair value procedures established and approved by the board of directors. In certain circumstances these procedures include the use of independent pricing services. The intended effect of applying fair value pricing is to compute an NAV that accurately reflects the value of the Fund's portfolio at the time that the NAV is calculated, to discourage potential arbitrage market timing in Fund shares, to mitigate the dilutive impact of such attempted arbitrage market timing and to be fair to purchasing, redeeming and existing shareholders. However, the application of fair value pricing procedures may, on occasion, worsen rather than mitigate the potential dilutive impact of shareholder trading.

In addition, trading in foreign portfolio securities generally, or in securities markets in a particular country or countries, may not take place on every NYSE business day. Furthermore, trading takes place in various foreign markets on days that are not business days for the NYSE, and on which the Fund's NAV is not calculated (in which case, the net asset value of the Fund's shares may change on days when shareholders will not be able to purchase or redeem Fund shares). Thus, the calculation of the Fund's NAV does not take place contemporaneously with the determination of the prices of many of the foreign portfolio securities used in the calculation. If events affecting the last determined values of these foreign securities occur (determined through the monitoring process described above), the securities will be valued at fair value determined in good faith in accordance with the Fund's fair value procedures established and approved by the board of directors.

#### Accounts with Low Balances

If your account has been open for more than one year and its value falls below \$500, we will mail you a notice asking you to bring the account back up to its applicable minimum investment amount. If you choose not to do so within 30 days, we will close your account and mail the proceeds to the address of record. You will not be charged a CDSC if your account is closed for this reason. This policy does not apply to: (1) certain broker-controlled accounts established through the National Securities Clearing Corporation's Networking system; (2) Class A accounts established pursuant to a conversion from Class B; (3) tax-deferred retirement plan accounts; (4) active automatic investment plan accounts; (5) broker-dealer sponsored separately managed accounts (wrap accounts); (6) accounts held through a 529 college savings program; and (7) Coverdell Education Savings Plan accounts.

#### Statements, Reports and Prospectuses

You will receive quarterly account statements that show all your account transactions during the quarter. You also will receive written notification after each transaction affecting your account (except for distributions and transactions made through automatic investment or withdrawal programs, which will be reported on your quarterly statement).

You also will receive the Fund's financial reports every six months as well as an annual updated prospectus. To reduce Fund expenses, we try to identify related shareholders in a household and send only one copy of the financial reports and prospectus. This process, called "householding," will continue indefinitely unless you instruct us otherwise. If you prefer not to have these documents househanded, please call us at (800) 632-2301. At any time you may view current prospectuses and financial reports on our website.

If you choose, you may receive your statements, financial reports and prospectuses through electronic delivery (please see "Investor Services - Telephone/Online Privileges").

#### Investment Representative Account Access

If there is a dealer or other investment representative of record on your account, he or she will be able to obtain your account information, conduct transactions for your account, and also will receive copies of all notifications and statements and other information about your account directly from the Fund.

#### Street or Nominee Accounts

You may transfer your shares from the street or nominee name account of one dealer to another, as long as both dealers have an agreement with Distributors. We will process the transfer after we receive authorization in proper form from your delivering securities dealer.

#### Joint Accounts

Unless you specify a different registration, shares issued to two or more owners are registered as "joint tenants with rights of survivorship" (shown as "Jt Ten" on your account statement). To make any ownership changes to jointly owned shares, or to sever a joint tenancy in jointly owned shares, all owners must agree in writing.

#### Joint Account Risk with Telephone/Online Privileges

You will automatically receive telephone/online privileges when you open your account. If your account has more than one registered owner, telephone/online privileges allow the Fund to accept online registration for online services (including electronic delivery of shareholder documents) and transaction instructions online or by telephone from only one registered owner. This means that

any one registered owner on your account, acting alone and without the consent of any other registered owner, may give the Fund instructions by telephone, online or in writing (subject to any limitations in telephone or online privileges) to:

- Exchange shares from a jointly registered Fund account requiring all registered owner signatures into an identically registered money fund account that only requires one registered owner's signature to redeem shares;
- Redeem Fund shares and direct the redemption proceeds to a pre-established bank account that may or may not be owned by you and, if owned by you jointly with someone else, only requires one person to withdraw funds by check or otherwise; and
- Purchase Fund shares by debiting a pre-established bank account that may be owned by you.

If you do NOT want another registered owner on your account to be able to issue these kinds of instructions to the Fund without your consent, you must instruct the Fund to deny/terminate online privileges and the ability to issue such instructions by telephone so that these types of instructions will only be accepted in writing signed by all account owners. This decision will apply to any other fund into which you may exchange your jointly owned Fund shares. Any later decision to permit these types of instructions by telephone and/or online will need to be given to the Fund in a written instruction signed by all registered owners.

#### Additional Policies

Please note that the Fund maintains additional policies and reserves certain rights, including:

- The Fund may restrict, reject or cancel any purchase orders, including an exchange request.
- The Fund may modify, suspend, or terminate telephone/online privileges at any time.
- The Fund may make material changes to or discontinue the exchange privilege on 60 days' notice or as otherwise provided by law.
- The Fund may stop offering shares completely or may offer shares only on a limited basis, for a period of time or permanently.
- Normally, redemptions are processed by the next business day, but may take up to seven days to be processed if making immediate payment would adversely affect the Fund.
- In unusual circumstances, we may temporarily suspend redemptions or postpone the payment of proceeds, as allowed by federal securities laws.

- For redemptions over a certain amount, the Fund may pay redemption proceeds in securities or other assets rather than cash if the investment manager determines it is in the best interest of the Fund, consistent with applicable law.
- You may only buy shares of a fund (including the purchase side of an exchange) eligible for sale in your state or jurisdiction.
- To permit investors to obtain the current price, dealers are responsible for transmitting all orders to the Fund promptly.

#### Dealer Compensation

##### Class A, C & R

Qualifying dealers who sell Fund shares may receive sales commissions and other payments. These are paid by Distributors from sales charges received from purchasing or redeeming shareholders, from distribution and service (12b-1) fees from the Fund and from Distributors' other financial resources. Dealers may also receive shareholder servicing fees for servicing investors who indirectly hold Franklin Templeton fund shares through dealer-maintained brokerage accounts as more fully described under "Shareholder servicing and transfer agent" of the "Management and Other Services" section in the SAI. These fees are paid by the Fund's transfer agent from payments it receives under its agreement with the Fund.

If any dealer commissions are paid in connection with a purchase which is subsequently rejected or results in any trading restriction placed on the purchaser as a result of a determination by the Fund's investment manager or transfer agent that the purchase may be connected with trading activity that may be detrimental to the Fund as described in the Fund's "Frequent Trading Policy," the dealer shall, upon demand, refund such commissions to Distributors.

|                                 | Class A             | Class C           | Class R |
|---------------------------------|---------------------|-------------------|---------|
| <b>Commission (%)</b>           | —                   | 1.00 <sup>1</sup> | —       |
| Investment under \$50,000       | 5.00                | —                 | —       |
| \$50,000 but under \$100,000    | 3.75                | —                 | —       |
| \$100,000 but under \$250,000   | 2.80                | —                 | —       |
| \$250,000 but under \$500,000   | 2.00                | —                 | —       |
| \$500,000 but under \$1 million | 1.60                | —                 | —       |
| \$1 million or more             | up to 1.00          | —                 | —       |
| <b>12b-1 fee to dealer</b>      | 0.25 <sup>2,3</sup> | 1.00 <sup>4</sup> | 0.50    |

1. Commission includes advance of the first year's 0.25% 12b-1 service fee. Distributors may pay a prepaid commission. However, Distributors does not pay a prepaid commission on any purchases by Employer Sponsored Retirement Plans.

2. For purchases at NAV where Distributors paid a prepaid commission, dealers may start to receive the 12b-1 fee in the 13th month after purchase. For purchases at NAV where Distributors did not pay a prepaid commission, dealers may start to receive the 12b-1 fee at the time of purchase.



3. Under the Distribution Plan for Class A, the Fund may pay up to 0.30% to Distributors or others, out of which 0.05% generally will be retained by Distributors for its distribution expenses.

4. Dealers may be eligible to receive up to 0.25% at the time of purchase and may be eligible to receive 1% starting in the 13th month. During the first 12 months, the full 12b-1 fee will be paid to Distributors to partially offset the commission and the prepaid service fee paid at the time of purchase. For purchases at NAV where Distributors did not pay a prepaid commission, dealers may start to receive the 12b-1 fee at the time of purchase.

**Other dealer and financial intermediary compensation.** Distributors may make payments (a portion of which may be reimbursable under the terms of the Fund's Rule 12b-1 distribution plans) to certain dealers who have sold shares of Franklin Templeton mutual funds. In the case of any one dealer, marketing support payments will generally not exceed 0.05% of the total assets of Franklin Templeton mutual funds attributable to that dealer, on an annual basis. For a dealer exceeding \$50 billion in total assets of Franklin Templeton mutual funds, Distributors may agree to marketing support payments up to 0.06% of such assets, on an annual basis. Marketing support payments made to organizations located outside the U.S., with respect to investments in the Fund by non-U.S. persons, may exceed this limitation. Distributors makes these payments in connection with the qualifying dealers' efforts to educate financial advisors about Franklin Templeton funds. Any assets held on behalf of Employer Sponsored Retirement Plans for which payment is made to a financial intermediary pursuant to the following paragraph will be excluded from the calculation of marketing support payments pursuant to this paragraph.

Distributors and/or its affiliates may also make payments (a portion of which may be reimbursable under the terms of the Fund's Rule 12b-1 distribution plans) to certain financial intermediaries in connection with their activities that are intended to assist in the sale of shares of Franklin Templeton mutual funds, directly or indirectly, to certain Employer Sponsored Retirement Plans. In the case of any one financial intermediary, such payments will not exceed 0.10% of the total assets of Franklin Templeton mutual funds held, directly or indirectly, by such Employer Sponsored Retirement Plans, on an annual basis.

A number of factors will be considered in determining these payments, including the qualifying dealer or financial intermediary's sales, assets and redemption rates, the nature and quality of any servicing provided by the financial intermediary, and the quality of the dealer or financial intermediary's relationship with Distributors. Distributors will, on an annual basis, determine the advisability of continuing these payments. These payments may be in addition to any shareholder servicing fees paid by the Fund's transfer agent from payments it receives under its agreement with the Fund.

To the extent permitted by SEC and Financial Industry Regulatory Authority rules and other applicable laws and regulations, Distributors may pay or allow other promotional incentives or payments to dealers.

Sales of Fund shares, as well as shares of other funds in Franklin Templeton Investments, is not considered a factor in the selection of broker-dealers to execute the Fund's portfolio transactions. Accordingly, the allocation of portfolio transactions for execution by broker-dealers that sell Fund shares is not considered marketing support payments to such broker-dealers.

You can find further details in the SAI about the payments made by Distributors and the services provided by your financial advisor. Your financial advisor may charge you additional fees or commissions other than those disclosed in this prospectus. You should ask your financial advisor for information about any payments it receives from Distributors and any services it provides, as well as about fees and/or commissions it charges.

## Questions

If you have any questions about the Fund or your account, you can write to us at P.O. Box 33030, St. Petersburg, FL 33733-8030. You also can call us at one of the following numbers. For your protection and to help ensure we provide you with quality service, all calls may be monitored or recorded.

| Department Name               | Telephone Number   | Hours (Pacific time,<br>Monday through Friday) |
|-------------------------------|--|--|
| Shareholder Services          | (800) 632-2301   | 5:30 a.m. to 5:00 p.m.                         |
| Fund Information              | (800) DIAL BEN<br>(800) 342-5236   | 5:30 a.m. to 5:00 p.m.                         |
| Retirement Services           | (800) 527-2020   | 5:30 a.m. to 5:00 p.m.                         |
| Advisor Services              | (800) 524-4040   | 5:30 a.m. to 5:00 p.m.                         |
| Hearing Impaired Assistance   | For hearing impaired assistance,<br>please contact us via a Relay Service. |  |
| Automated<br>Telephone System | (800) 632-2301<br>(800) 524-4040<br>(800) 527-2020                         | (around-the-clock access)                      |

This page intentionally left blank

This page intentionally left blank

This page intentionally left blank

## FOR MORE INFORMATION

You can learn more about the Fund in the following documents:

### Annual/Semiannual Report to Shareholders

Includes a discussion of recent market conditions and Fund strategies that significantly affected Fund performance during its last fiscal year, financial statements, detailed performance information, portfolio holdings and, in the annual report only, the independent registered public accounting firm's report.

### Statement of Additional Information (SAI)

Contains more information about the Fund, its investments and policies. It is incorporated by reference (is legally a part of this prospectus).

For a free copy of the current annual/semiannual report or the SAI, please contact your investment representative or call us at the number below. You also can view the current annual/semiannual report and the SAI online through [franklintempleton.com](http://franklintempleton.com).

You also can obtain information about the Fund by visiting the SEC's Public Reference Room in Washington, DC (phone (202) 551-8090) or the EDGAR Database on the SEC's Internet site at <http://www.sec.gov>. You can obtain copies of this information, after paying a duplicating fee, by writing to the SEC's Public Reference Section, Washington, DC 20549-1520 or by electronic request at the following email address: [publicinfo@sec.gov](mailto:publicinfo@sec.gov).



FRANKLIN TEMPLETON  
INVESTMENTS

One Franklin Parkway  
San Mateo, CA 94403-1906  
(800) DIAL BEN®/342-5236  
[franklintempleton.com](http://franklintempleton.com)

Investment Company Act file #811-04892  
© 2015 Franklin Templeton Investments. All rights reserved.

 10% Total Recycled Fiber

For hearing impaired  
assistance, please contact us  
via a Relay Service.

2305

101 P 01/15